



The Heteroptera Collection *Ernst Heiss* at the Tiroler Landesmuseum Ferdinandeum. Part XIII: Pentatomomorpha VI: Families Cydnidae, Thyreocoridae, Plataspidae

ERNST HEISS, ANDREAS ECKELT, MANFRED LEDERWASCH
& ROMED UNTERASINGER

Abstract: The Heteroptera Collection *Ernst Heiss* at the Tiroler Landesmuseum Ferdinandeum. Part XIII: Pentatomomorpha VI: Families Cydnidae, Thyreocoridae, Plataspidae. The private collection of Ernst Heiss, donated to the Tiroler Landesmuseum Ferdinandeum (TLMF) is now deposited at its Natural History Department in Hall in Tirol, where the collection is digitized. To facilitate future access to the collection for scientific research, these data are consecutively published in several parts. Twelve parts are already published. Part XIII comprises data of 1,710 specimens assigned to 3 families, 5 subfamilies, 23 genera, 58 species and sub-species.

Keywords: Heteroptera, Pentatomomorpha, Cydnidae, Thyreocoridae, Plataspidae, collection Heiss, Tiroler Landesmuseum, faunistics

Citation: HEISS E., ECKELT A., LEDERWASCH M. & UNTERASINGER R. 2024: The Heteroptera Collection *Ernst Heiss* at the Tiroler Landesmuseum Ferdinandeum. Part XIII: Pentatomomorpha VI: Families Cydnidae, Thyreocoridae, Plataspidae. – Entomologica Austriaca 31: 37–76

Introduction

The family Cydnidae or burrower bugs is distributed worldwide and well-represented in temperate and tropical regions. Their habitus is usually ovoid and convex with characteristic legs adapted for digging. Dark, frequently blackish colouration is predominant. More than 144 genera and 1,185 species are described to date (SCHUH & WEIRAUCH 2020). Thyreocoridae comprise a small family with only four palaeartic species of which two are recorded here. The family Plataspidae includes 59 genera and 530 species (DAVIDOVÁ-VILÍMOVÁ 2006) and most species inhabit tropical and subtropical areas of the Eastern hemisphere. They are phytophagous and of beetle-like body shape. Collection data of six species are presented.

The present Part XIII is the continuation of a series of contributions documenting the so far identified faunistic data from the Heteroptera collection of Ernst Heiss at the Tiroler Landesmuseum. A large number of specimens collected in exotic countries waits for future identification. Local collections assembled by A. Hernegger, A. Kofler, M. Lederwasch, R. Wohlmann and E. Pechlaner have already been included. Twelve

parts are already published (see HEISS et al., 2023). Part XIII comprises data of 1,710 specimens assigned to 3 families, 5 subfamilies, 23 genera, 58 species and sub-species.

These data are presented in geographical alphabetical order within the subfamilies and comprise country, province or locality of collection (when available), number of specimens, date and collector. Country codes are abbreviated following ISO 3166–6 code. Habitus-photos of 23 species representing all recorded genera are presented.

Systematics follows LIS (2006), DAVIDOVÁ-VILÍMOVÁ (2006) and AUKEMA, RIEGER & RABITSCH (2013); Extrapalaeartic specimens cited and identified by specialists (eg. J.A. Lis, P. Magnien) are marked as “exld” (extralimital distribution).

Abbreviations for frequently cited collectors:

HA HERNEGGER ALOIS

HE HEISS ERNST

KA KOFLER ALOIS

LM LEDERWASCH MANFRED

(nd) = no date, (nl) = no locality, (nn) = no collector

Collection data of Cydnidae, Thyreocoridae & Plataspidae

Family Cydnidae Billberg, 1820

Subfamily Cephalocteinae MULSANT & REY, 1867

Genus *Stibaropus* DALLAS, 1851

Stibaropus henkei (JAKOVLEV, 1874)

BGR Bulgaria, Burgas, Nesebar, 2 Ex. 7.VI.1982 leg. Josifov M.

Subfamily Cydninae BILLBERG, 1820

Genus *Chilocoris* MAYR, 1864

Chilocoris heissi LIS, 1994

NPL Nepal, Mid-Western Development Area, Barhabise, 1 Ex. leg. Franz H. (nd)

Chilocoris nepalensis LIS, 1994

NPL Nepal, Mid-Western Development Area, Rarasee/Umgebung Pina, 2 Ex. 29.IX.1972 leg. Franz H.

NPL Nepal, Western Development Area, Kali-Gandaki-Tal/Zwischen Tukche und Lete, 1 Ex. 1.IX.1971 leg. Franz H.

NPL Nepal, Western Development Area, Pokhara W/Goropani, 1 Ex. 1.IX.1971 leg. Franz H.

NPL Nepal, Western Development Area, Jumla/Dzunda Khola-Tal, 1 Ex. leg. Franz H. (nd)

Chilocoris nitidulus LIS, 1994

NPL Nepal, Western Development Area, Pokhara W/Goropani, 1 Ex. 1.IX.1971 leg. Franz H.

Chilocoris piceus SIGNORET, 1884

PAK Pakistan, Sindh, Karachi, 6 Ex. 20.X.1971 leg. HE

Genus *Cydnus* FABRICIUS, 1803*Cydnus aterrimus* (FORSTER, 1703)

AUT Austria, Burgenland, Winden E/NSG Hackelsberg, 1 Ex. 12.VIII.1967 leg. HA

AUT Austria, Lower Austria, Bisamberg, 1 Ex. 17.VI.2000 leg. HE

AUT Austria, Vienna, Jedleseesee, 2 Ex. leg. Mader (nd)

AUT Austria, Vienna, Vienna env., 1 Ex. 1.III.1919 leg. Fahringer A.

CHE Switzerland, Wallis, Sierre (Siders), 1 Ex. 21.VI.1951 leg. Schwarz M.

DEU Germany, Rheinland-Pfalz, Mainzer Sand, 2 Ex. 9.IX.1978 leg. HE

ESP Spain, Andalusia, Almeria, 1 Ex. 1.IV.1980 leg. Aistleitner E.

ESP Spain, Andalusia, Bayarcal, 1 Ex. 24.VI.1988 leg. Schacht W.

ESP Spain, Andalusia, Torremolinos, 1 Ex. 11.III.1972 leg. Kippenberg H.

ESP Spain, Balearic Islands, Formentera, 1 Ex. 19.IV.1984 leg. Deschka G.

ESP Spain, Balearic Islands, Formentera, 1 Ex. 1.VI.1970 leg. Jochum E.

ESP Spain, Cataluña, Cadaques, 2 Ex. 13.VII.1977 leg. Schedl W.

ESP Spain, Gerona, La Escala/Gerona env., 3 Ex. 20.VII.1974 leg. HE

ESP Spain, Murcia, Totana-Carivete, 1 Ex. 7.V.1975 leg. Mager & Mühle

FRA France, Occitanie, Peyrepertuse, 1 Ex. 10.VII.2015 leg. LM

FRA France, Occitanie, NSG Mas Larrieu, 1 Ex. 13.VII.2015 leg. LM

FRA France, Occitanie, Prats-de-Mollo-la Preste, 1 Ex. 20.VI.1977 leg. Pericart J.

FRA France, Pays de la Loire, Angers/Rue Franklin, 1 Ex. 25.V.2011 leg. Desse JM.

FRA France, Provence-Alpes-Côte d'Azur, Fos-sur-Mer, 2 Ex. 18.V.2011 leg. Desse JM.

FRA France, Provence-Alpes-Côte d'Azur, Cap Camarat, 1 Ex. 21.IV.1986 leg. Gusenleitner J.

GRC Greece, Ionische Inseln, Argostolion/Kephallinia, 1 Ex. 16.IV.1971 leg. Schedl W.

GRC Greece, Ossa Ori, 2 Ex. 24.V.1988 leg. Mühle H.

HRV Croatia, Dalmatia, Metajna, 1 Ex. 1.VIII.1978 leg. Kühbandner M.

HRV Croatia, Zadar, Paklenica-Nationalpark, 6 Ex. 20.V.2014 leg. LM

IRN Iran, Nord-Chorasan, Golestan NP/Tangegol, 1 Ex. 23.V.2001 leg. HE

ITA Italy, Basilicata, Piano Ruggio/Malvento, 1 Ex. 4.VII.2016 leg. LM

ITA Italy, Genova, Sestri Levante, 1 Ex. 20.V.1977 leg. HA

- ITA Italy, Campania, Ischia/Sant Angelo, 1 Ex. 7.IV.1991 leg. Gusenleitner J.
 ITA Italy, Lazio, Rom W/Palidoro, 1 Ex. 1.VIII.1971 leg. HE
 ITA Italy, Liguria, Taggia, 1 Ex. 11.V.2008 leg. KA
 ITA Italy, Sardegna, Cala Gonone/Dorgali E, 1 Ex. 24.IV.1992 leg. HE
 ITA Italy, Sardegna, Santa Margherita di Pula, 1 Ex. 20.VI.1987, 2 Ex. 1.VII.1984 leg. HE
 ITA Italy, Sardegna, Dorgali, 1 Ex. 5.VI.2003 leg. Thaler K.
 ITA Italy, Sardegna, Gennargentu/Brunco Spina, 1 Ex. 24.IV.1992 leg. HE
 ITA Italy, Sardegna, Capo Caccia, 1 Ex. 24.IV.1992 leg. HE
 ITA Italy, Sardegna, Alghero, 2 Ex. 29.VI.1976 leg. Wewalka G.
 ITA Italy, Sardegna, Casa Cantoniera/Bidicolai, 1 Ex. 24.IV.1992 leg. HE
 ITA Italy, Savona, Noli, 1 Ex. 8.VI.1951 leg. Schwarz M.
 ITA Italy, Sicilia, Linosa, 1 Ex. 30.V.1997 leg. Aistleitner E.
 ITA Italy, Sicilia, Taormina S/Naxos, 1 Ex. 5.V.1961 leg. Schwarz M.
 ITA Italy, Sicilia, Cefalu, östl. Ortsrand, 5 Ex. 31.V.2005 leg. Kofler B.
 ITA Italy, Sicilia, Pozzallo, 3 Ex. 8.VI.2005 leg. Kofler B.
 ITA Italy, Südtirol, Bozen/Stadlhof, 1 Ex. 4.VI.1930 leg. Ratter J.
 ITA Italy, Südtirol, Brixen, 1 Ex. 13.VI.1952 leg. Kofler F.
 LBY Libya, Schachhat, 1 Ex. 15.V.1971 leg. Tauber A.F.
 MAR Morocco, Rabat-Salé-Kenitra, Sale, 1 Ex. 17.IV.1979 leg. Schedl W.
 MAR Morocco, Souss-Massa-Draa, Tachfine, Barrage (Stausee) Youssef, 1 Ex. 30.I.2003 leg. Egger M.
 TUN Tunisia, Kasserine, Kasserine/10 km östlich, 2 Ex. 10.V.1973 leg. Gusenleitner J.
 TUN Tunisia, Tunis, Carthago, 1 Ex. 19.V.1973 leg. Gusenleitner J.
 TUN Tunisia, Sfax, 1 Ex. 6.VII.1976 leg. Mager & Mühle H.
 TUN Tunisia, Tunis, 2 Ex. 1.V.1967 leg. (nn)
 TUR Turkey, Antalya, Alanya, Umgebung Festung, 1 Ex. 19.V.1993 leg. Kippenberg H.
 TUR Turkey, Mugla, Fethiye/Yaniklar, 2 Ex. 15.VI.1992 leg. Egger M.

Genus *Aethus* DALLAS, 1851

Aethus lindbergi WAGNER, 1957

- PAK Pakistan, Punjab, Rawalpindi, 16 Ex. 13.X.1971 leg. HE

Aethus pilosus (HERRICH-SCHAEFFER, 1834)

- ESP Spain, Valencia, Lago Salinas, 2 Ex. 1.V.1988 leg. Günther H.
 GRC Greece, Crete, Aghios Nikolaos, 1 Ex. 27.III.1985 leg. Hopp I.
 SAU Saudi Arabia, asch-Scharqiyya, Al Khobar, 3 Ex. 5.VI.1982, 3 Ex. 20.VIII.1982, 1 Ex. 1.XI.1982 leg. HE
 TUN Tunisia, Gabès, Matmata/Gabes, 1 Ex. 20.III.1983 leg. HE

Genus *Byrsinus* FIEBER, 1860*Byrsinus albipennis* (A. COSTA, 1853)

ESP Spain, Catalonia, Castelldefels, 1 Ex. 27.I.1963 leg. Ribes

ESP Spain, Catalonia, Castelldefels, 3 Ex. 28.IX.1962 leg. Weber H.

Byrsinus balcanicus (JOSIFOV, 1986)

BGR Bulgaria, Burgas, Alepu, 2 Ex. 30.V.1982, 2 Ex. 16.V.1984 leg. Josifov M.

GRC Greece, Crete, Kastellakia, 1 Ex. 18.VIII.1977 leg. Malicky H.

Byrsinus flavicornis (FABRICIUS, 1794)

FRA France, Nouvelle-Aquitaine, Arvert, 2 Ex. 1.V.1971 leg. (nn)

FRA France, Nouvelle-Aquitaine, Arcachon SW/Cap Ferret, 2 Ex. 22.VIII.1956 leg. Weber H.

NLD Netherlands, Nordbrabant, Bergen op Zoom, 1 Ex. 21.VI.1974 leg. Aukema B.

NLD Netherlands, Nordholland, Heemskerk, 1 Ex. 29.V.1977 leg. Aukema B.

Byrsinus laticollis (WAGNER, 1954)

ESP Spain, Valencia, Santa Pola, 3 Ex. 13.XII.1973 leg. Sauleda N.

Byrsinus pilosulus (KLUG, 1845)

AUT Austria, Burgenland, Winden E/NSG Hackelsberg, 1 Ex. 20.V.1967, 5 Ex. 15.VIII.1967 leg. HA

AUT Austria, Burgenland, Jungerberg, 2 Ex. 27.V.1967 leg. HA

AUT Austria, Burgenland, Königsberg/Winden am See NW, 1 Ex. 10.V.1970 leg. HA

ITA Italy, Genova, Cavi di Lavagna, 3 Ex. 20.V.1976 leg. HA

ITA Italy, Südtirol, Kloster Säben, 1 Ex. 19.V.1955 leg. HA

ITA Italy, Trentino-Südtirol, Castelfeder, 1 Ex. 24.VII.1954, 1 Ex. 27.VII.1954, 2 Ex. 26.IX.1954, 1 Ex. 27.IX.1954, 1 Ex. 11.IV.1955, 1 Ex. 12.IV.1955, 1 Ex. 21.VI.1957, 1 Ex. 1.VIII.1957 leg. HA

Byrsinus syriacus (HORVATH, 1917)

SYR Syrian Arab Republic, Dair-az-Zur, Deir-ez-Zor, 8 Ex. 11.VI.1980 leg. Mühle H.

Genus *Fromundus* DISTANT, 1901*Fromundus pygmaeus* (DALLAS, 1851)

PAK Pakistan, Punjab, Rawalpindi, 1 Ex. 13.X.1971 leg. HE

Genus *Geotomus* MULSANT & REY, 1866*Geotomus brunnipennis* WAGNER, 1953

BGR Bulgaria, Burgas, Burgas NE/Pomorie, 5 Ex. 5.VI.1982 leg. Josifov M.

FRA France, Midi-Pyrénées, Argeles, 2 Ex. 6.IV.1964 leg. Tempere

Geotomus elongatus (HERRICH-SCHAEFFER, 1840)

ESP Spain, Canary Islands, Gran Canaria, Mundo Aborigen, 1 Ex. 9.I.1997 leg. Grimm

MNE Montenegro, Klopot SW, 1 Ex. 4.VI.2014 leg. Eckelt A.

Geotomus petiti WAGNER, 1954

FRA France, Île-de-France, Fontainebleau, 1 Ex. 15.VI.1953 leg. Weber H.

Geotomus punctulatus (A. COSTA, 1847)

ESP Spain, Andalusia, Torremolinos, 5 Ex. 11.III.1972 leg. Kippenberg H.

ESP Spain, Baskenland, Labastida N/Haro, 4 Ex. 6.V.2007 leg. HE

FRA France, Nouvelle-Aquitaine, Arcachon SW/Cap Ferret, 7 Ex. 22.VIII.1956 leg. Weber H.

GRC Greece, Crete, Chersonisos, 1 Ex. 1.IV.1983 leg. Frieser R.

PRT Portugal, Acores, Sao Miguel/Mosteiros, 4 Ex. 22.IX.1998 leg. HE

PRT Portugal, Acores, Sao Miguel/road Ponta Degada - Ribeiro Grande, 1 Ex. 22.IX.1998 leg. HE

PRT Portugal, Acores, Sao Miguel/Sete Cidades, 3 Ex. 22.IX.1998 leg. HE.

PRT Portugal, Acores, Acores: Insel Sao Miguel, Ponta Delgada, 11 Ex. 22.IX.1998 leg. HE

PRT Portugal, Acores, Sao Miguel/Ponta da Ferraria, 3 Ex. 22.IX.1998 leg. HE

Genus *Lactistes* SCHIODTE, 1848

Lactistes incertus SIGNORET, 1881

SAU Saudi Arabia, Asir NP/env. Abha, 1 Ex. 7.VI.1982 leg. HE

YEM Yemen, Capital Municipality, Sanaa env./Wadi Sihan, 1 Ex. 7.VI.1987 leg. Mühle H.

Lactistes rastellus SCHIODTE, 1848 (exld)

PAK Pakistan, Khyber Pakhtunkhwa, Swat/Madyan, 1 Ex. 1.VI.1972 leg. Holzschuh C.

Genus *Macroscytus* FIEBER, 1860

Macroscytus brunneus (FABRICIUS, 1803)

EGY Egypt, Gouvernement Al-Isma'iliyya, Fayed, 1 Ex. 1.V.1943 leg. Priesner H.

GRC Greece, Egean Islands, Insel Milos, 2 Ex. 20.VII.2003 leg. Ungerank W.

GRC Greece, Crete, Chersonisos, 1 Ex. 1.IV.1983 leg. Frieser R.

GRC Greece, Crete, Rethymnon Umgebung/Sises, 1 Ex. 21.VII.1977, 1 Ex. 18.VIII.1977, 1 Ex. 26.IX.1977, 1 Ex. 11.X.1977, leg. Malicky H.

GRC Greece, Crete, Chania, 5 Ex. 24.IV.1983 leg. Heiss E.

GRC Greece, Peloponnes, Panachaiko Mt./Kalanistra, 1 Ex. 20.IV.2014 leg. Egger M.

IRN Iran, Mazandaran, Mazandaran/Miankaleh Wildlife Sanctuary and Wetland, 21 Ex. 12.V.2001 leg. HE

ITA Italy, Rom W/ Palidoro, 1 Ex. 1.VIII.1964 leg. HE

TUN Tunisia, Gabès, Matmata/Gabes, 1 Ex. 20.III.1983 leg. HE

TUN Tunisia, Medenine, Djerba, 1 Ex. 28.III.1992, 1 Ex. 1.IV.1992, 2 Ex. 4.IV.1992 leg. Gusenleitner J.

Genus *Microporus* UHLER, 1872

Microporus nigrita (FABRICIUS, 1794)

AUT Austria, Burgenland, Winden E/NSG Hackelsberg, 1 Ex. 15.VIII.1967 leg. HA

AUT Austria, Burgenland, Illmitz, 1 Ex. 20.IX.1965 leg. HA

AUT Austria, Lower Austria, Naturpark Mannersdorf-Wüste, 1 Ex. 25.VIII.1968 leg. Legorsky

AUT Austria, Nordtirol, Silz, 3 Ex. 26.III.1961 leg. HA

AUT Austria, Nordtirol, Silz, 2 Ex. 26.III.1961 leg. Pechlaner E.

AUT Austria, Nordtirol, Stams, 1 Ex. 8.VIII.1964 leg. HE

AUT Austria, Nordtirol, Innsbruck/Hötting, Sprengerkreuz, 1 Ex. 21.III.1959 leg. HA

AUT Austria, Nordtirol, Innsbruck/Hötting, Sprengerkreuz, 1 Ex. 30.III.1961 leg. Pechlaner E.

AUT Austria, Nordtirol, Innsbruck, Arzl, 1 Ex. 4.X.1958 leg. Pechlaner E.

AUT Austria, Nordtirol, Omes/Axams N, 1 Ex. 7.V.1959, 1 Ex. 17.V.1959 leg. HA

AUT Austria, Nordtirol, Fritzens, 1 Ex. 24.IX.1964 leg. HE

AUT Austria, Nordtirol, Hatting, 5 Ex. 10.V.1959 leg. HA

AUT Austria, Nordtirol, Mils bei Hall, 1 Ex. 19.IV.1953 leg. Pechlaner E.

AUT Austria, Nordtirol, Judenstein/Rinn N, 1 Ex. 11.V.1952 leg. Wohlmann R.

AUT Austria, Nordtirol, Sonnenberg/Fließ W, 1 Ex. 6.V.1963 leg. HA

AUT Austria, Nordtirol, Tratzberg/Jenbach SW, 1 Ex. 6.V.1951 leg. Kofler F.

DEU Germany, Bavaria, Gröbern, 1 Ex. 19.VIII.1997 leg. Schuster G.

ITA Italy, Genova, Cavi di Lavagna, 1 Ex. 17.V.1977 leg. HA

ITA Italy, Lombardia, Gargnano, 9 Ex. 30.VIII.1971 leg. HE

ITA Italy, Südtirol, Brixen, 1 Ex. 6.IV.1965 leg. HE

ITA Italy, Südtirol, Brixen, 1 Ex. 1.IV.1952, 1 Ex. 8.V.1952, 1 Ex. 19.V.1952, 1 Ex. 13.VI.1952, 1 Ex. 16.VI.1952, 1 Ex. 2.VIII.1952, 1 Ex. 6.VIII.1952, 1 Ex. 1.IV.1954 leg. Kofler F.

ITA Italy, Südtirol, Feldthurns: Schloss Velthurns, 2 Ex. 5.V.1952 leg. Kofler F.

ITA Italy, Südtirol, Sigmundskron, 1 Ex. 18.IV.1960 leg. HA

ITA Italy, Südtirol, Montan, 1 Ex. 17.VII.1954, 1 Ex. 25.VII.1954, 1 Ex. 8.IX.1954, 2 Ex. 10.IX.1954, 2 Ex. 1.V.1955, 3 Ex. 1.VII.1955, leg. Wohlmann R.

Genus *Coloecydnus* LIS, 1994

Coloecydnus ernsti LIS, 1994

COD Congo, South-Kivu, Mount Kahuzi, 1 Ex. 27.V.1985 leg. Mühle H.

RWA Rwanda, Nyakabuye, 2 Ex. 20.I.1984 leg. HE

Subfamily Sehirinae AMYOT & SERVILLE, 1843

Genus *Amaurocoris* STÅL, 1865

Amaurocoris curtus (BRULLÉ, 1839)

ESP Spain, Canary Islands, Tenerife, Playa la Tejita, 2 Ex. 29.III.1964 leg. Ribes J.

IRN Iran, Hormozgan, Beshagerd Mountains/Angohran, 1 Ex. 25.III.2000 leg. (nn)

SAU Saudi Arabia, asch-Scharqiyya, Al Khobar, 8 Ex. 5.VI.1982, 3 Ex. 20.VIII.1982 leg. HE

Genus *Linospa* SIGNORET, 1881

Linospa orbicularis (JAKOVLEV, 1885)

SAU Saudi Arabia, asch-Scharqiyya, Al Khobar, 10 Ex. 5.VI.1982, 2 Ex. 20.VIII.1982 leg. HE

SAU Saudi Arabia, Riad, 7 Ex. 1.VI.1982 leg. HE

Genus *Adomerus* MULSANT & REY, 1865

Adomerus biguttatus (LINNAEUS, 1758)

AUT Austria, Carinthia, Karnische Alpen, 2 Ex. 24.VII.1967 leg. Hölzel

AUT Austria, Carinthia, Klagenfurt Umgebung, 1 Ex. 8.II.1950 leg. Priesner

AUT Austria, Lower Austria, Leckermoos/Göstling SE, 1 Ex. 19.IX.1971 leg. Ressler F.

AUT Austria, Lower Austria, Lonitzberg/Purgstall SW, 1 Ex. 8.X.1971 leg. Ressler F.

AUT Austria, Lower Austria, Rothwald, Thaleralm, 1 Ex. 20.VII.1996 leg. Ressler F.

AUT Austria, Lower Austria, Rothwald, NÖ, 1 Ex. 14.VIII.2006 leg. (nn)

AUT Austria, Nordtirol, Gries im Sulztal, 5 Ex. 9.IX.1962 leg. HA

AUT Austria, Nordtirol, Matri am Brenner, 2 Ex. 9.VI.1963 leg. Pechlaner E.

AUT Austria, Nordtirol, Ampass, 1 Ex. 13.VI.1963 leg. Pechlaner E.

AUT Austria, Nordtirol, Baumkirchen, 1 Ex. 5.V.1944 leg. Ratter J.

AUT Austria, Nordtirol, Mils bei Hall, 1 Ex. 24.VI.1944 leg. Ratter J.

AUT Austria, Nordtirol, Schöfner Berg/Matri am Brenner NE, 1 Ex. 6.V.1962 leg. Pechlaner E.

- AUT Austria, Nordtirol, Gallhof/Schönberg SW, 4 Ex. 14.VIII.1974 leg. HA
- AUT Austria, Nordtirol, Telfes im Stubai, 1 Ex. 1.VI.1944 leg. Wörndle A.
- AUT Austria, Nordtirol, Wildmoos/Seefeld in Tirol NW, 1 Ex. 17.IX.1961 leg. HA
- AUT Austria, Nordtirol, Wildmoosalm/Seefeld in Tirol N, 1 Ex. 11.IX.1987 leg. HE
- AUT Austria, Nordtirol, Vintlalm/Innsbruck NE, 1 Ex. 17.IX.1978 leg. HE
- AUT Austria, Nordtirol, Tulfes/Hall SE, 1 Ex. 25.VI.1980 leg. HA
- AUT Austria, Nordtirol, Innsbruck/Hötting/Sprengerkreuz, 1 Ex. 19.VIII.1956, 22 Ex. 19.IX.1959, 3 Ex. 29.IX.1956 leg. HA
- AUT Austria, Nordtirol, Wörgl Umgebung, 1 Ex. 5.VI.1964 leg. HE
- AUT Austria, Nordtirol, Stegerberg, 2 Ex. 28.VI.1992 leg. Döberl M.
- AUT Austria, Nordtirol, Gramaiser Tal, 1 Ex. 16.VII.1935 leg. Knabl H.
- AUT Austria, Nordtirol, Reutte, 1 Ex. 6.IV.1916 leg. Knabl H.
- AUT Austria, Nordtirol, Arzberg/Schwaz S, 1 Ex. 27.III.1946, 2 Ex. 18.III.1947, 1 Ex. 19.III.1947, 1 Ex. 28.III.1947, 1 Ex. 2.VII.1950, 1 Ex. 26.IX.1950, 1 Ex. 30.IX.1950 leg. Kofler F.
- AUT Austria, Nordtirol, Schwaz/Paulinum, 1 Ex. 19.IV.1951 leg. Kofler F.
- AUT Austria, Nordtirol, Tratzberg/Jenbach SW, 2 Ex. 30.III.1947 leg. Kofler F.
- AUT Austria, Nordtirol, Innsbruck Umgebung, 2 Ex. 29.VII.1965 leg. HE
- AUT Austria, Osttirol, Tristacher Moor (= Alter Tristacher See), 1 Ex. 21.IV.1963 leg. KA
- AUT Austria, Osttirol, Göriach, 1 Ex. 13.IX.1966 leg. KA
- AUT Austria, Osttirol, Lavant, Kirchberg, 1 Ex. 19.VIII.2006 leg. KA
- AUT Austria, Osttirol, Lavant/Nikolsdorf NW, 1 Ex. 16.IV.1963, 1 Ex. 5.VII.1987 leg. KA
- AUT Austria, Osttirol, Patriasdorf/Lienz NW, 1 Ex. 21.II.1959 leg. KA
- AUT Austria, Osttirol, Kienburg, 1 Ex. 28.VI.2006 leg. KA
- AUT Austria, Osttirol, Huben/Matrei in Osttirol SE, 1 Ex. 24.IV.1984 leg. KA
- AUT Austria, Osttirol, Matrei in Osttirol Umgebung, 1 Ex. 17.III.2002 leg. KA
- AUT Austria, Osttirol, Thurn/Lienz NW, 4 Ex. 19.III.1965 leg. KA
- AUT Austria, Osttirol, Tristacher See/Lienz SE, 1 Ex. 20.IV.1963 leg. KA
- AUT Austria, Osttirol, Schloßberg, Lienz, 1 Ex. 2.X.1960 leg. KA
- ITA Italy, Südtirol, Brixen/Golleregg, 1 Ex. 9.IV.1964 leg. Peez A.
- ITA Italy, Südtirol, Brixen/Schießstand, 1 Ex. 17.IX.1963 leg. Peez A.
- ITA Italy, Südtirol, Brixen/Kreuztal, 2 Ex. 18.VI.1965 leg. Peez A.
- ITA Italy, Südtirol, Mendel, 1 Ex. 11.V.1965 leg. Peez A.
- ITA Italy, Südtirol, St. Michael/Eppan, 1 Ex. 6.VIII.1956 leg. HA
- ITA Italy, Südtirol, Montan, 1 Ex. 1.VII.1955 leg. Wohlmann R.
- ITA Italy, Trentino, Pomarolo, 4 Ex. 19.VII.1995, 1 Ex. 23.IX.1995 leg. HE

SVN Slovenia, Kranjska Gora, 2 Ex. 9.VII.1986 leg. Günther H.

SVN Slovenia, Raibler Alm/Predel, 1 Ex. 20.IV.1996 leg. Döberl M.

SVN Slovenia, Terovaner Wald (Trnovski Gozd): Caven, E-Hänge, 1 Ex. 27.VI.1998 leg. Döberl M.

Genus *Canthophorus* MULSANT & REY, 1866

Canthophorus dubius (SCOPOLI, 1863)

AUT Austria, Burgenland, Oslip SE/Silberberg, 1 Ex. 18.V.2013 leg. LM

AUT Austria, Burgenland, Siegendorfer Puszta, 1 Ex. 24.V.2008 leg. HE

AUT Austria, Burgenland, Winden am See, 1 Ex. 21.IV.1960 leg. Gusenleitner J.

AUT Austria, Burgenland, Winden am See, 1 Ex. 28.V.1967 leg. Kappeller R.

AUT Austria, Burgenland, Galgenberg/Rechnitz W, 5 Ex. 27.V.2005 leg. HE

AUT Austria, Burgenland, Neusiedler See, 3 Ex. 1.VII.1965 leg. Weber H.

AUT Austria, Carinthia, Sattnitz, S Klagenfurt, 1 Ex. 13.VI.1969 leg. (nn)

AUT Austria, Lower Austria, Hochrieß/Heide, 1 Ex. 28.VI.1973 leg. Ressler F.

AUT Austria, Nordtirol, Fließ Trockenhänge, 2 Ex. 20.VIII.1973 leg. HA

AUT Austria, Nordtirol, Elmen, 2 Ex. leg. Kofler F. (nd)

AUT Austria, Nordtirol, Forchach, 1 Ex. 28.III.1943 leg. Kofler F.

AUT Austria, Nordtirol, Niederthei (Ötztal), 1 Ex. 1.VIII.1950 leg. Kofler F.

AUT Austria, Nordtirol, Kaunerberg/Kauns NE, 1 Ex. 24.V.1972 leg. Rieger Ch.

DEU Germany, Bavaria, Karlstadt/NSG Rehnützberg-Kalbenstein, 2 Ex. 17.V.1974 leg. Mager

DEU Germany, Bavaria, Erlabrunn: Wolkenberg, 1 Ex. 23.V.1973 leg. Mager

DEU Germany, Rheinland-Pfalz, Heidesheim am Rhein, 1 Ex. 11.VI.1955 leg. Zebe

ESP Spain, Balearic Islands, Formentera, 1 Ex. 1.VI.1970 leg. Jochum E.

FRA France, Provence-Alpes-Cote d'Azur, Nizza, 1 Ex. 6.VII.1959 leg. Eckerlein H.

ITA Italy, Südtirol, Brixen/Elvaser Bühl (=Pinatzbühl), 1 Ex. 22.IX.1965 leg. Peez A.

ITA Italy, Südtirol, Brixen/Frötscher Wiesen, 1 Ex. 18.V.1963 leg. Peez A.

ITA Italy, Südtirol, Latsch, 2 Ex. 2.VIII.1972 leg. HA

ITA Italy, Südtirol, Schabs, 1 Ex. 31.VII.1960 leg. HA

ITA Italy, Südtirol, Montiggel, 1 Ex. leg. (nd)

ITA Italy, Südtirol, Brixen/Tschötscher Heide, 2 Ex. 4.VI.1965 leg. Peez A.

ITA Italy, Südtirol, Tauferertal, 2 Ex. 9.VI.1976 leg. Burmann K.

ITA Italy, Trentino, Monte Altissimo, Gipfel, 2 Ex. 1.IX.1972 leg. Burmann K.

ITA Italy, Trentino, Pomarolo, 2 Ex. 19.VII.1995 leg. HE

ITA Italy, Trentino, Caldonazzo, 2 Ex. 7.VI.1976 leg. Schedl W.

ITA Italy, Trentino, Monte Brione, 1 Ex. 1.V.1974 leg. Schedl W.
 ITA Italy, Veneto, Malcesine, 3 Ex. 30.V.1978 leg. Seidenstücker G.
 ITA Italy, Veneto, Monti Lessini, 6 Ex. 16.V.1976 leg. Burmann K.
 SVN Slovenia, Presnica, 1 Ex. 2.VII.1998 leg. Döberl M.

Canthophorus impressus (HORVATH, 1880)

AUT Austria, Burgenland, Illmitz, 1 Ex. 29.IX.1965, 1 Ex. 25.VI.1969 leg. Kappeller R.
 AUT Austria, Carinthia, Karnische Alpen, 1 Ex. 8.VI.1949, 1 Ex. 28.V.1949, 1 Ex. 12.VII.1951, 1 Ex. 17.VI.1963, leg. Hölzel
 AUT Austria, Carinthia, Mauthen SW: Mauthner Alm, 2 Ex. 4.VIII.1986 leg. KA
 AUT Austria, Carinthia, Grafenstein, 1 Ex. leg. (nd)
 AUT Austria, Carinthia, Rattendorfer Alm, 1 Ex. 5.VI.1950 leg. Hölzel
 AUT Austria, Carinthia, Fleißtal O Heiligenblut, 1 Ex. 4.IX.1982 leg. KA
 AUT Austria, Lower Austria, Ötscher Hüttenkogel, 1 Ex. 23.VII.1983 leg. Ressler F.
 AUT Austria, Lower Austria, Neuhaus, 2 Ex. 3.VI.1984 leg. Ressler F.
 AUT Austria, Lower Austria, Hochrieß/Heide, 1 Ex. 22.V.1972, 1 Ex. 16.VI.1985 leg. Ressler F.
 AUT Austria, Nordtirol, Untermieming, 7 Ex. 1.V.1955 leg. HA
 AUT Austria, Nordtirol, Fronhausen, 3 Ex. 20.V.1971 leg. HA
 AUT Austria, Nordtirol, Untermieming, 7 Ex. 27.V.1962 leg. Kappeller R.
 AUT Austria, Nordtirol, Holzleitensattel/Nassereith SE, 10 Ex. 11.V.1971 leg. HA
 AUT Austria, Nordtirol, Mötztal NW: Obsteig, 8 Ex. 2.VI.1971, 1 Ex. 13.V.1972 leg. HE
 AUT Austria, Nordtirol, Hahntennjoch/Imst NW, 1 Ex. 20.VI.1980 leg. Burmann K.
 AUT Austria, Nordtirol, Mittelberg, 5 Ex. 16.IX.1962 leg. HA
 AUT Austria, Nordtirol, Kaunergrat, 1 Ex. 1.VII.1937 leg. (nc)
 AUT Austria, Nordtirol, Obergurgl, 1 Ex. 17.IX.2004 leg. Glaser F.
 AUT Austria, Nordtirol, Obergurgl, 1 Ex. 10.VII.1961, 1 Ex. 3.VIII.1962 leg. Pechlaner E.
 AUT Austria, Nordtirol, Obergurgl SE, Rotmoostal, 1 Ex. 1.VIII.1975 leg. HA
 AUT Austria, Nordtirol, Venter Tal, 1 Ex. 6.IX.1971 leg. HE
 AUT Austria, Nordtirol, Gaisbergtal/Obergurgl SE, 2 Ex. 19.VII.1972 leg. Kahlen M.
 AUT Austria, Nordtirol, Rotmoostal/Obergurgl SE, 1 Ex. 1.VIII.2003 leg. Kaufmann R.
 AUT Austria, Nordtirol, Gurgler Tal, 1 Ex. 7.VI.1972 leg. Schedl W.
 AUT Austria, Nordtirol, Gaisbergtal/Obergurgl SE, 1 Ex. 13.V.1969 leg. Schedl W.
 AUT Austria, Nordtirol, Tarrenz/Imst NE, 1 Ex. 3.V.1969 leg. HE
 AUT Austria, Nordtirol, Niedertal/Vent S, 1 Ex. 18.V.1971 leg. Schedl W.
 AUT Austria, Nordtirol, Nordkette/Innsbruck N, 1 Ex. 4.VI.1966 leg. Burmann K.

- AUT Austria, Nordtirol, Innsbruck/Hötting, 18 Ex. 20.IV.1975 leg. HA
- AUT Austria, Nordtirol, Innsbruck/Rossau, 12 Ex. 14.V.1960 leg. HA
- AUT Austria, Nordtirol, Arzler Reiß-Innsbruck N, 1 Ex. 17.V.1936 leg. Ratter J.
- AUT Austria, Nordtirol, Seegrube/Innsbruck NW, 1 Ex. 5.VI.1950, 2 Ex. 22.VI.1951, 2 Ex. 19.VI.1954 leg. Wohlmann R.
- AUT Austria, Nordtirol, Vennatal/Brenner NE, 2 Ex. 26.V.1963 leg. HA
- AUT Austria, Nordtirol, Vennatal/Brenner NE, 1 Ex. 24.VI.1965 leg. Schedl W.
- AUT Austria, Nordtirol, Vennatal/Brenner NE, 1 Ex. 2.VI.1963 leg. Spiess W.
- AUT Austria, Nordtirol, Matrei am Brenner, 3 Ex. 7.VI.1965 leg. Kappeller R.
- AUT Austria, Nordtirol, Gleinser Mähder, 11 Ex. 7.VI.1965 leg. HA
- AUT Austria, Nordtirol, Krößbach (= Krössbach)/Neustift im Stubaital SW, 1 Ex. 24.IX.1948 leg. Pechlaner E.
- AUT Austria, Nordtirol, Patscherkofel, 1 Ex. 10.VI.1948 leg. Ratter J.
- AUT Austria, Nordtirol, Reith bei Seefeld, 1 Ex. 22.VII.1966 leg. HE
- AUT Austria, Nordtirol, Gschwandtkopf, 1 Ex. 3.VI.1968 leg. HE
- AUT Austria, Nordtirol, Scharnitz, 1 Ex. 13.VI.1954 leg. Kappeller R.
- AUT Austria, Nordtirol, Padasterjoch/Gschnitz NE, 2 Ex. 22.VII.1948 leg. Pechlaner E.
- AUT Austria, Nordtirol, Padasterjoch/Gschnitz NE, 1 Ex. 11.VII.1949 leg. Wohlmann R.
- AUT Austria, Nordtirol, Padasterjoch/Gschnitz NE, 1 Ex. 23.VII.1948 leg. Wörndle A.
- AUT Austria, Nordtirol, Mösern/Seefeld in Tirol SW, 1 Ex. 13.VIII.1966 leg. HA
- AUT Austria, Nordtirol, Wildmoos/Seefeld in Tirol NW, 1 Ex. 10.XI.1965 leg. HE
- AUT Austria, Nordtirol, Volderwaldhof, 2 Ex. 2.IX.1948 leg. Ratter J.
- AUT Austria, Nordtirol, Padauner Kogel/Gries am Brenner E, 1 Ex. 11.VII.1960 leg. HA
- AUT Austria, Nordtirol, Vennatal/Brenner NE, 1 Ex. 2.VI.1963 leg. HA
- AUT Austria, Nordtirol, Innsbruck SE/Heiligwasser, 1 Ex. 20.V.1950 leg. Pechlaner E.
- AUT Austria, Nordtirol, Fiss, 2 Ex. 22.VI.1973 leg. HA
- AUT Austria, Nordtirol, Gepatschhaus, 1 Ex. 11.IX.1960 leg. HA
- AUT Austria, Nordtirol, Stegerberg, 1 Ex. 12.V.1916 leg. Knabl H.
- AUT Austria, Nordtirol, Elmen, 1 Ex. 1.V.1947 leg. Kofler F.
- AUT Austria, Nordtirol, Forchach/rechte Lechau, 1 Ex. 30.III.1943 leg. Kofler F.
- AUT Austria, Nordtirol, Forchach/Feld, 1 Ex. 6.VIII.1945 leg. Kofler F.
- AUT Austria, Nordtirol, Zireiner-See, 11 Ex. 4.VI.1972, 1 Ex. 20.IX.1991, 2 Ex. 24.IX.1991 leg. HE
- AUT Austria, Nordtirol, Zireiner-See, 1 Ex. 1.V.1946 leg. Kofler F.
- AUT Austria, Nordtirol, Stans/Schwaz NE, 1 Ex. 27.V.1951 leg. Pechlaner E.
- AUT Austria, Nordtirol, Vomperberg/Schwaz W, 2 Ex. 27.IV.1930 leg. Ratter J.

- AUT Austria, Nordtirol, Zwieselstein, 1 Ex. 25.V.1958 leg. HA
- AUT Austria, Nordtirol, Untergurgl, 1 Ex. 18.VII.1962 leg. Pechlaner E.
- AUT Austria, Osttirol, Goggsteig/Lienz S, 1 Ex. 12.VIII.1965 leg. KA
- AUT Austria, Osttirol, Thal, 1 Ex. 28.VI.1978 leg. KA
- AUT Austria, Osttirol, Zetttersfeld/Lienz NE, 1 Ex. 29.V.1960 leg. KA
- AUT Austria, Osttirol, Alfenalm/Innervillgraten-Kalkstein SW, 1 Ex. 4.VII.1982 leg. KA
- AUT Austria, Osttirol, Moaralm/Kals am Großglockner NW, 1 Ex. 7.VI.1987 leg. KA
- AUT Austria, Osttirol, Taurer Wirt/Kals am Großglockner N, 1 Ex. 25.VI.1967 leg. KA
- AUT Austria, Osttirol, Böheimebenalm, 1 Ex. 19.VIII.1988 leg. KA
- AUT Austria, Osttirol, Kals am Großglockner, 1 Ex. 15.V.1966 leg. KA
- AUT Austria, Osttirol, Kalser Tal/Kals am Großglockner NW, 1 Ex. 5.VI.1993 leg. KA
- AUT Austria, Osttirol, Kartitsch, 1 Ex. 11.VI.1978 leg. KA
- AUT Austria, Osttirol, Kartitsch-Obstans, 1 Ex. 23.VI.1960 leg. KA
- AUT Austria, Osttirol, Kartitsch/Tannwiese, 1 Ex. 5.VI.1978 leg. KA
- AUT Austria, Osttirol, Pebellalm, 1 Ex. 23.VI.1967 leg. KA
- AUT Austria, Osttirol, Patscher Alm/Staller Sattel NE, 1 Ex. 5.VI.1965 leg. KA
- AUT Austria, Osttirol, Seebachalm, 1 Ex. 30.V.1982 leg. KA
- AUT Austria, Osttirol, Seebachalm env., 1 Ex. 9.IX.1997 leg. KA
- AUT Austria, Osttirol, Lienzer Dolomiten/Lienz S, 1 Ex. 12.VII.1970 leg. KA
- AUT Austria, Osttirol, Kerschbaumer Törl/Lienz SE, 2 Ex. 7.VI.1959, 1 Ex. 22.VII.1970 leg. KA
- AUT Austria, Osttirol, Virgen S/Wetterkreuz, 1 Ex. 3.VIII.1978 leg. KA
- AUT Austria, Osttirol, Obersee, 1 Ex. 18.VII.1963 leg. KA
- AUT Austria, Salzburg, Edelweißspitze NE, 1 Ex. 29.VI.1999 leg. Schwarz M.
- AUT Austria, Styria, St. Anna am Aigen, 1 Ex. 29.VI.1997 leg. Döberl M.
- DEU Germany, Bavaria, Vorderriß, 1 Ex. 26.IV.1977 leg. Schuster G.
- DEU Germany, Bavaria, Karwendel, 1 Ex. 15.VI.1948 leg. Wörndle A.
- DEU Germany, Bavaria, Abensberg, 2 Ex. 26.V.1989 leg. Döberl M.
- DEU Germany, Bavaria, Marching, 2 Ex. 5.VIII.1989 leg. Döberl M.
- HRV Croatia, Lika-Senj, Karlobag E/Passhöhe, 1 Ex. 22.V.2014 leg. LM
- ITA Italy, Südtirol, Seiser Alm, 1 Ex. 31.VIII.1962 leg. Peetz A.
- ITA Italy, Südtirol, Völs am Schlern, 1 Ex. 2.VIII.2006 leg. Kopf T.
- ITA Italy, Südtirol, Brixen/Tschötscher Heide, 1 Ex. 22.VII.1963 leg. Peetz A.
- ITA Italy, Trentino, Bocca di Navene, 1 Ex. 1.VII.1970 leg. Burmann K.
- ITA Italy, Trentino, Cavalese, 1 Ex. 25.VII.1954 leg. HA
- ITA Italy, Trentino, Corna Piana, 2 Ex. 15.VI.1971 leg. Kahlen M.

ITA Italy, Trentino, Vallarsa, Streva, 1 Ex. 30.VI.1925 leg. Ratter J.
 ITA Italy, Veneto Monte Baldo, 1 Ex. 1.VI.1968, 2 Ex. 25.VI.1972, 4 Ex. 25.VI.1980
 leg. Burmann K.
 ITA Italy, Veneto Monte Baldo, 4 Ex. 15.VII.1972, 2 Ex. 18.VI.1978 leg. HE
 SVN Slovenia, Raibler Alm/Predel, 3 Ex. 20.IV.1996 leg. Döberl M.
 SVN Slovenia, Predmeja, 3 Ex. 18.IV.1996 leg. Döberl M.

Canthophorus maculipes (MULSANT & REY, 1852)

ITA Italy, Genova, Cavi di Lavagna, 17 Ex. 20.V.1975, 8 Ex. 20.V.1976, 1 Ex. 17.V.1977
 leg. HA
 ITA Italy, Liguria, Taggia, 1 Ex. 11.V.2008 leg. KA
 ITA Italy, Trentino, Lago di Ledro, 1 Ex. 19.V.1971 leg. (nc).
 PRT Portugal, Algarve, Santa Barbara de Nexe, 3 Ex. 1.VII.1969 leg. Coiffait
 TUR Turkey, Ankara, Ankara/Baraj, 2 Ex. 1.VI.1969 leg. Seidenstücker G.
 TUR Turkey, Konya, Akschehir, 4 Ex. 1.VI.1965 leg. Seidenstücker G.

Canthophorus melanopterus contrarius (WAGNER, 1956)

CYP Cyprus, Yaloussa, 2 Ex. 26.V.1972 leg. Eckerlein H.

Canthophorus melanopterus melanopterus (HERRICH-SCHAEFFER, 1835)

AUT Austria, Burgenland, Breitenbrunn, 1 Ex. 12.VII.1960 leg. Gusenleitner J.
 AUT Austria, Burgenland, Illmitz, 1 Ex. 20.IX.1965 leg. HA
 AUT Austria, Burgenland, Illmitz, 2 Ex. 20.IX.1965 leg. Kappeller R.
 AUT Austria, Burgenland, Winden am See, 1 Ex. 18.V.1970 leg. HE
 AUT Austria, Lower Austria, Hainburger Berge, 1 Ex. 19.VII.1961 leg. Weber H.
 CYP Cyprus, Kyrenia, Pentadaktylos 1 Ex. 4.IV.2008, 1 Ex. 7.IV.2008 leg. Schedl W.
 CYP Cyprus, Nikosia, Troodos/Cedar Valley, 1 Ex. 12.V.1995 leg. Schedl W.
 CYP Cyprus, Nikosia, Troodos/Cedar Valley, 1 Ex. 14.II.1995 leg. Thaler B.
 CYP Cyprus, Girne/5 km westlich, 2 Ex. 3.IV.2008 leg. Schedl W.
 EGY Egypt, Gouvernement Al-Isma'iliyya, Fayed, 2 Ex. 1.V.1943 leg. Priesner H.
 ESP Spain, Cuenca, Cuenca, 1 Ex. 16.VI.1971 leg. Hüttinger E.
 GRC Greece, Crete, Chersonisos, 1 Ex. 1.IV.1983 leg. Frieser R.
 GRC Greece, Crete, Archanes, 1 Ex. 24.III.1984 leg. Hopp I.
 GRC Greece, Crete, Chersonisos, 2 Ex. 21.IV.2006 leg. Schedl W.
 GRC Greece, Crete, Adele, 1 Ex. 14.IV.1986 leg. Egger M.
 GRC Greece, Crete, Amoudara Heraklion, 1 Ex. 25.IV.1990 leg. HE.
 GRC Greece, Peloponnisos Dytiki Ellada ke Ionio, Leonidi, 1 Ex. 2.V.1994 leg. HE

ITA Italy, Sardegna, Santa Margherita di Pula, 41 Ex. 1.VII.1984 leg. HE
 ITA Italy, Friuli-Venezia Giulia, Udine, Cornino, 1 Ex. 21.V.1994 leg. KA
 ITA Italy, Veneto Monte Baldo, 1 Ex. 1.VII.1970, 1 Ex. 1.IX.1972 leg. Burmann K.
 ITA Italy, Veneto Alonte, 1 Ex. 1.V.1972 leg. Osella G.
 LBY Libya, Gasr-el-Garaballi, 9 Ex. 3.V.1965 leg. Eckerlein H.
 TUN Tunisia, Gabes, Gabes/15 km NW, 2 Ex. 20.II.1983 leg. HE
 TUN Tunisia, Jendouba, Ain-Draham, 1 Ex. 24.VI.1976 leg. Mager & Mühle
 TUN Tunisia, Medenine, Zarzis, 6 Ex. 20.III.1983 leg. HE
 TUN Tunisia, Medenine, Zarzis, 3 Ex. 30.VI.1976 leg. Mager & Mühle
 TUN Tunisia, Medenine, Djerba, 1 Ex. 20.VI.1983 leg. HE
 TUN Tunisia, Tozeur, Nefta, 1 Ex. 6.V.1973 leg. Gusenleitner J.
 TUN Tunisia, Corbon, 1 Ex. 7.V.1963 leg. Eckerlein
 TUN Tunisia, Midoun/Djerba, 10 Ex. 20.II.1983 leg. HE
 TUR Turkey, Kastamonu, Ballidag, 1 Ex. 1.IV.1969 leg. Osella G.

Canthophorus mixtus ASANOVA, 1964

AUT Austria, Burgenland, Illmitz, 1 Ex. 1.VIII.1965 leg. Frieser R.
 HUN Hungary, Bács-Kiskun, Fülöpháza, 2 Ex. 29.VII.1989 leg. Aukema B.
 TJK Tajikistan, Kondara, 1 Ex. 1.VII.1978 leg. Muche W. H.

Genus *Crocistethus* FIEBER, 1860

Crocistethus waltlianus (FIEBER, 1837)

ESP Spain, Andalusia, Vera, 1 Ex. 1.V.1952 leg. Coiffait
 ESP Spain, Valencia, Albufera, 1 Ex. 30.IV.1913 leg. Moroder
 MAR Morocco, Agadir, Issene Qued, 1 Ex. 23.III.1987 leg. Gusenleitner J.
 MAR Morocco, Agadir, 3 Ex. 29.III.1987, 1 Ex. 31.III.1987 leg. Gusenleitner J.

Genus *Exosehirus* WAGNER, 1963

Exosehirus marginatus (SIGNORET, 1881)

TUR Turkey, Nigde, Ciftehan, 2 Ex. 11.VI.1958 leg. Seidenstücker G.

Genus *Legnotus* SCHIODTE, 1848

Legnotus fumigatus (A. COSTA, 1853)

BUL Bulgaria, Smoljan/6 km NW, 1 Ex. 1.VI.1962 leg. Josifov M.
 ITA Italy, Lazio, Rom W/Palidoro, 1 Ex. 9.VIII.1965 leg. HE
 MAR Morocco, Fez-Meknès, Ain Leuh, 2 Ex. 1.VIII.1984 leg. HE
 TUR Turkey, Karaman, Ayranci env., 1 Ex. 3.IV.1978 leg. HE

Legnotus limbosus (GEOFFROY, 1785)

- AUT Austria, Burgenland, Siegendorfer Puszta, 1 Ex. 24.V.2008 leg. HE
- AUT Austria, Burgenland, Gols/Golser Wald, 3 Ex. 10.VI.1988 leg. Steinberger W.
- AUT Austria, Burgenland, Zurndorf, 1 Ex. 10.VI.1988 leg. Thaler
- AUT Austria, Lower Austria, Hundsheimer Berg, 1 Ex. 19.V.1977 leg. Mairhuber F.
- AUT Austria, Lower Austria, Hochrieß/Heide, 1 Ex. 22.V.1972 leg. Rausch H.
- AUT Austria, Lower Austria, Purgstall an der Erlauf, 1 Ex. 28.VII.1970, 1 Ex. 17.VI.1972, 3 Ex. 5.VI.1972, 1 Ex. 22.VI.1972, 1 Ex. 21.V.1978, 1 Ex. 21.IV.1994 leg. Ressler F.
- AUT Austria, Nordtirol, Innsbruck/Harterhof, 1 Ex. 10.VIII.1977 leg. HA
- AUT Austria, Nordtirol, Innsbruck/Höttinger Au, 1 Ex. 1.VII.1986 leg. Steinberger W.
- AUT Austria, Nordtirol, Söll/Hoheneiberg/Sekundärwald, 19 Ex. 18.V.2014 leg. Kopf T.
- AUT Austria, Nordtirol, Söll/Hoheneiberg/Ruderalwiese, 2 Ex. 6.VII.2016 leg. Kopf T.
- AUT Austria, Nordtirol, Fließ/Sonnenhänge, 1 Ex. 7.III.1982 leg. Kahlen M.
- AUT Austria, Osttirol, Unterpeischlach, 1 Ex. 9.VI.2004 leg. KA
- AUT Austria, Osttirol, Lavanter Mure, 1 Ex. 7.V.1996 leg. KA
- AUT Austria, Osttirol, Lienzer Klause/Lienz SW, 1 Ex. 14.V.2004 leg. KA
- AUT Austria, Osttirol, Lienz/linker Iselkai, 1 Ex. 15.VI.1959 leg. KA
- AUT Austria, Osttirol, Patriasdorf/Lienz NW, 1 Ex. 22.V.2006 leg. KA
- DEU Germany, Baden-Württemberg, Fridingen an der Donau, 1 Ex. 18.VIII.2014 leg. LM
- DEU Germany, Bavaria, Schwabmünchen/Badstraße 26, 1 Ex. 5.V.1994 leg. Schuster G.
- DEU Germany, Bavaria, Dietersheim/Isarauwald, 2 Ex. 31.X.2016 leg. Fuchs H.
- DEU Germany, Bavaria, Mauerkirchen, 1 Ex. 9.IV.2018 leg. Wolf I.
- DEU Germany, Bavaria, Grassau, 1 Ex. 6.VI.2020 leg. Mühle H.
- FRA France, Île-de-France, Montereau-Fault-Yonne, 1 Ex. 30.IV.1977 leg. Pericart J.
- FRA France, Corse, Gruvone, 1 Ex. 22.V.1972 leg. Tempere
- ITA Italy, Basilicata, Piano Ruggio/Malvento, 1 Ex. 4.VII.2016 leg. LM
- ITA Italy, Gorizia, San Pier d' Isonzo, 1 Ex. 30.V.1993 leg. KA
- ITA Italy, Veneto, Abano: Montegrotto, 1 Ex. 19.IV.1977 leg. Mairhuber F.
- ITA Italy, Veneto, Colli Euganei, 1 Ex. 20.IV.1975 leg. Mairhuber F.
- ITA Italy, Südtirol, Bozen/Rentsch, 1 Ex. 5.VI.1930 leg. Ratter J.
- ITA Italy, Südtirol, Frangart, 1 Ex. 9.VI.1954 leg. Pechlaner E.
- ITA Italy, Südtirol, Frangart, 3 Ex. 9.VI.1954 leg. Ratter J.
- ITA Italy, Südtirol, Kaltern, 2 Ex. 25.V.1953 leg. Wohlmann R.
- ITA Italy, Südtirol, Klausen, 1 Ex. 27.VI.1954 leg. Wohlmann R.
- ITA Italy, Südtirol, Montan, 2 Ex. 1.VII.1955 leg. Wohlmann R.

- ITA Italy, Südtirol, Schabs N/Putzerhof, 4 Ex. 24.IV.2003 leg. KA
 ITA Italy, Südtirol, Moritzing, 1 Ex. 24.VI.1954 leg. Ratter J.
 ITA Italy, Südtirol, Pfatten, 1 Ex. 4.VI.1930 leg. Ratter J.
 ITA Italy, Südtirol, Moritzing, 1 Ex. 26.V.1953 leg. Ratter J.
 ITA Italy, Südtirol, Sigmundskron, 1 Ex. 1.VI.1930, 1 Ex. 8.VI.1954 leg. Ratter J.
 ITA Italy, Südtirol, Bozen/Kalvarienberg, 2 Ex. 5.VI.1954 leg. Ratter J.

Legnotus picipes (FALLEN, 1807)

- AUT Austria, Burgenland, Zurndorf, 1 Ex. 2.VII.1988 leg. Thaler
 AUT Austria, Burgenland, Neusiedler See, 9 Ex. 1.VII.1965 leg. Weber H.
 AUT Austria, Carinthia, Gailberg/Oberdrauburg S, 1 Ex. 27.VII.1987 leg. KA
 AUT Austria, Carinthia, Kappellerteich/St. Peter in Holz/Spittal/Drau NW, 1 Ex. 23.IX.1993 leg. (nc).
 AUT Austria, Carinthia, Bad Bleiberg, 2 Ex. 1.I.1987 leg. Penterman E.
 AUT Austria, Carinthia, Sablatnig Moor/Eberndorf SE, 2 Ex. 20.VII.1989, 1 Ex. 25.VIII.1989 leg. Kofler A. & Mildner
 AUT Austria, Lower Austria, Hainburg an der Donau, 1 Ex. leg. Mader (nd).
 AUT Austria, Lower Austria, Zehetgrub, 2 Ex. 6.VII.1984, 2 Ex. 30.VII.1970 leg. Ressler F.
 AUT Austria, Lower Austria, Weidling, 1 Ex. leg. Kubinyi (nd).
 AUT Austria, Lower Austria, Schauboden b. Purgstall, 1 Ex. 27.IX.1972, 1 Ex. 3.VIII.1985, 1 Ex. 30.VII.1984, 1 Ex. 14.VIII.1984, 1 Ex. 3.VIII.1985 leg. Ressler F.
 AUT Austria, Nordtirol, Innsbruck: Mühlau, Wurmbach, 2 Ex. 8.IV.1960 leg. HA
 AUT Austria, Nordtirol, Innsbruck/Hötting, 2 Ex. 30.X.1960 leg. HA
 AUT Austria, Nordtirol, Innsbruck/Hötting, 1 Ex. 4.VI.1949 leg. Pechlaner E.
 AUT Austria, Nordtirol, Innsbruck, Allerheiligenhöfe, 1 Ex. 25.VI.1935 leg. Ratter J.
 AUT Austria, Nordtirol, Ampass, 2 Ex. 4.VII.1953 leg. HA
 AUT Austria, Nordtirol, Mils bei Hall, 2 Ex. 21.IX.1949 leg. Wohlmann R.
 AUT Austria, Nordtirol, Schönberg/Innsbruck S, 1 Ex. 9.IV.1961 leg. HA
 AUT Austria, Nordtirol, Moritzen/Telfs W, 1 Ex. 30.IV.1967 leg. HA
 AUT Austria, Nordtirol, Völs, 2 Ex. 6.IX.1958 leg. HA
 AUT Austria, Nordtirol, Zirl, 3 Ex. 2.VI.1963 leg. HA
 AUT Austria, Nordtirol, Zirler Weinberg/Zirl NW, 1 Ex. 19.VII.1962 leg. HA
 AUT Austria, Nordtirol, Martinsbühel/Zirl SE, 1 Ex. 23.IV.1966 leg. HA
 AUT Austria, Nordtirol, Zirler Schloßberg/Zirl N, 1 Ex. 10.VII.1956, 1 Ex. 26.II.1961 leg. HA
 AUT Austria, Nordtirol, Zirl env., 1 Ex. 6.VII.1953, 1 Ex. 23.VI.1962, 1 Ex. 7.VIII.1948 leg. Pechlaner E.

- AUT Austria, Nordtirol, Innsbruck/Mühlau/Scheibenbühel, 2 Ex. 26.IX.1948 leg. Wörndle A.
- AUT Austria, Nordtirol, Kufstein, Innrenaturierungsfläche, 1 Ex. 15.IV.2013 leg. LM
- AUT Austria, Nordtirol, Zams, 2 Ex. 12.VII.1978 leg. HE
- AUT Austria, Nordtirol, Fließ Trockenhänge, 2 Ex. 10.VII.1972 leg. HA
- AUT Austria, Nordtirol, Schwaz/Hof, 1 Ex. 16.IV.1951 leg. Kofler F.
- AUT Austria, Nordtirol, Wiesing/Steinbruch/Tiergarten/Felsrasen, 1 Ex. 6.VI.2015, 5 Ex. 29.VI.2015, 2 Ex. 15.VII.2015 leg. Kopf T.
- AUT Austria, Osttirol, Ainet/Lienz NW, 1 Ex. 23.VII.1967 leg. KA
- AUT Austria, Osttirol, Goggsteig/Lienz S, 1 Ex. 12.VIII.1966 leg. KA
- AUT Austria, Osttirol, Mittewald an der Drau, 1 Ex. 5.VIII.1963, 1 Ex. 29.VII.1987 leg. KA
- AUT Austria, Osttirol, Aguntum/Debant, 1 Ex. 18.VIII.1966, 1 Ex. 13.VI.2005 leg. KA
- AUT Austria, Osttirol, Dölsach, 1 Ex. 10.VII.1988 leg. KA
- AUT Austria, Osttirol, Peischlachtal, 1 Ex. 17.VIII.2011 leg. KA
- AUT Austria, Osttirol, Lavant/Nikolsdorf NW, 1 Ex. 25.V.1978 leg. KA
- AUT Austria, Osttirol, Lienz SW: Leisach, 1 Ex. 23.VIII.1968 leg. KA
- AUT Austria, Osttirol, Lienzer Klause/Lienz SW, 1 Ex. 17.VII.1991 leg. KA
- AUT Austria, Osttirol, Burgfrieden/Lienz SW, 1 Ex. 5.V.1965 leg. KA
- AUT Austria, Osttirol, Lienz/Stadtgebiet, 1 Ex. 22.IV.1964 leg. KA
- AUT Austria, Osttirol, Kienburg, 1 Ex. 28.VI.1987 leg. KA
- AUT Austria, Osttirol, Matrei in Osttirol Umgebung, 1 Ex. 9.VII.1984 leg. KA
- AUT Austria, Osttirol, Nörsach/Nikolsdorf SE, 1 Ex. 9.VI.1988 leg. KA
- AUT Austria, Osttirol, Luner/Nußdorf NE, 1 Ex. 19.VI.2006 leg. KA
- AUT Austria, Osttirol, St. Johann im Walde, 1 Ex. 20.VII.2004 leg. KA
- AUT Austria, Osttirol, Tristach/Draufufer, 1 Ex. 7.VII.2006 leg. KA
- AUT Austria, Osttirol, Ruine Rabenstein, 1 Ex. 26.V.2004, 1 Ex. 14.VII.2004 leg. KA
- AUT Austria, Osttirol, Obermauern/Virgen NW, 2 Ex. 27.VII.1978, 1 Ex. 28.VII.1998, 1 Ex. 29.VII.2009 leg. KA
- AUT Austria, Osttirol, Virgen Umgebung, 2 Ex. 1.I.1986 leg. KA
- AUT Austria, Osttirol, Lienz W: Maria Trost, 1 Ex. 30.IV.1965, 1 Ex. 8.VIII.1967 leg. KA
- DEU Germany, Bavaria, Oberdießen E/Kiesgrube, 1 Ex. 31.VIII.2009, 1 Ex. 8.IX.2009 leg. Schuster G.
- FRA France, Provence-Alpes-Côte d'Azur, Saint-Paul-sur-Ubaye, 1 Ex. 19.VII.1977 leg. Kippenberg H.
- ITA Italy, Lombardia, Lago di Garda, Muslone, 2 Ex. 30.IX.1988 leg. HE
- ITA Italy, Südtirol, Bozen/Eisackufer, 1 Ex. 14.VII.1965 leg. Peez A.

ITA Italy, Südtirol, Brixen, 1 Ex. 22.VI.1952, 1 Ex. 30.VI.1952 leg. Kofler F.
 ITA Italy, Südtirol, Brixen/Elvaser Bühl (= Pinatzbühl), 1 Ex. 18.IX.1964 leg. Peez A.
 ITA Italy, Südtirol, Klausen/Umgebung, 1 Ex. 27.VI.1954 leg. Wohlmann R.
 ITA Italy, Südtirol, Neustift, 1 Ex. 23.VII.1961 leg. Peez A.
 ITA Italy, Tuscany, Pania della Croce/Foce di Mosceta, 2 Ex. 9.VII.1988 leg. Daccordi
 ITA Italy, Veneto Lazise, 1 Ex. 20.IV.1971 leg. Kippenberg H.

Genus *Ochetostethus* FIEBER, 1860

Ochetostethus balcanicus WAGNER, 1940

GRC Greece, Crete, Heraklion Umgebung, 1 Ex. 7.IV.1971 leg. Wewalka G.

Ochetostethus heissi MAGNIEN, 2006

BGR Bulgaria, Cmygena, 1 Ex. 29.VIII.1957 leg. Josifov M.

CYP Cyprus, Limassol, Yermasoyia River, 1 Ex. 29.IV.1965, 1 Ex. 15.IV.1967 leg. Mavromoustakis

ISR Israel, South District, Sharsheret/Be'er Sheva 20 km west, 1 Ex. 16.V.1972 leg. Eckerlein H.

TUR Turkey, Antalya, Incekum, 1 Ex. 1.I.1985 leg. Frieser R.

Ochetostethus nanus HERRICH-SCHAEFFER, 1834

ESP Spain, Balearic Islands, Mallorca, Peguera, 2 Ex. 22.IV.1984 leg. Schedl W.

FRA France, Nouvelle-Aquitaine, Reserve Naturelle de Saucats, 2 Ex. 1.VIII.1965 leg. Tempere

FRA France, Nouvelle-Aquitaine, Grayan-et-l Hopital, 1 Ex. 1.VII.1965 leg. Tempere

HRV Croatia, Umag, 1 Ex. 20.VIII.1982 leg. Kofler

Ochetostethus opacus (SCHOLTZ, 1847)

PRT Portugal, Setúbal, Sesimbra, 2 Ex. 10.V.1989 leg. Braun G.

Ochetostethus pygmaeus (RAMBUR, 1839)

ESP Spain, Canary Islands, Gran Canaria, Tamaraceite, 1 Ex. 12.I.1997 leg. Grimm

Ochetostethus tarsalis (MULSANT & REY, 1852)

SAU Saudi Arabia, Asir NP/ Umg. Abha, 1 Ex. 7.VI.1982 leg. HE

Genus *Sehirus* AMYOT & SERVILLE, 1843

Sehirus luctuosus MULSANT & REY, 1866

AUT Austria, Lower Austria, Purgstall an der Erlauf, 1 Ex. 25.IV.2000 leg. Ressler F.

AUT Austria, Nordtirol, Innsbruck/Neuarzl, 1 Ex. 18.X.1953 leg. HA

- AUT Austria, Nordtirol, Innsbruck/Pulverturm, 9 Ex. 20.IV.1963 leg. HA
- AUT Austria, Nordtirol, Brandjoch-Innsbruck NW, Graben, 1 Ex. 11.V.1952 leg. Pechlaner E.
- AUT Austria, Nordtirol, Innsbruck/Hötting, 1 Ex. 17.IV.1952 leg. Wohlmann R.
- AUT Austria, Nordtirol, Innsbruck: Mühlau, 1 Ex. 30.IV.1952 leg. Wohlmann R.
- AUT Austria, Nordtirol, Silltal, 2 Ex. 28.III.1952 leg. Wohlmann R.
- AUT Austria, Nordtirol, Innsbruck, Arzl, 2 Ex. 27.V.1948, 1 Ex. 6.V.1950, 2 Ex. 9.V.1951, 2 Ex. 10.V.1952 leg. Wörndle A.
- AUT Austria, Nordtirol, Innsbruck, Arzl, leg. Wörndle A.
- AUT Austria, Nordtirol, Mils bei Hall, 1 Ex. 2.IV.1951 leg. Rief A.
- AUT Austria, Nordtirol, Mils bei Hall, 1 Ex. 6.VIII.1951 leg. Wohlmann R.
- AUT Austria, Nordtirol, Moritzen/Telfs W, 3 Ex. 15.VIII.1964, 3 Ex. 30.IV.1967 leg. HA
- AUT Austria, Nordtirol, Telfs, 3 Ex. 24.V.1964 leg. HA
- AUT Austria, Nordtirol, Telfs, 1 Ex. 24.V.1964, 8 Ex. 15.VIII.1964 leg. HE
- AUT Austria, Nordtirol, Telfs, 4 Ex. 15.VIII.1964 leg. Kappeller R.
- AUT Austria, Nordtirol, Thaurer Schloß/Innsbruck NE, 1 Ex. 3.IV.1955 leg. HA
- AUT Austria, Nordtirol, Valsertal, 1 Ex. 11.VI.1961 leg. Pechlaner E.
- AUT Austria, Nordtirol, Vögelsberg/Wattens S, 2 Ex. 25.VII.1950 leg. Kofler F.
- AUT Austria, Nordtirol, Söll/Hoheneiberg/Ruderalwiese, 1 Ex. 14.VI.2016 leg. Kopf T.
- AUT Austria, Nordtirol, Arzberg/Schwaz S, 1 Ex. 29.III.1946, 1 Ex. 14.V.1950, 1 Ex. 5.X.1950 leg. Kofler F.
- AUT Austria, Upper Austria, Rottenegg NW Walding, 1 Ex. 7.V.1960 leg. Schwarz M.
- AUT Austria, Osttirol, Gasthof Kreithof/Lienz SE, 1 Ex. 14.V.1986 leg. KA
- AUT Austria, Osttirol, Mittewald an der Drau, 1 Ex. 25.V.1982 leg. KA
- AUT Austria, Osttirol, Aguntum/Debant, 5 Ex. 18.VIII.1966 leg. KA
- AUT Austria, Osttirol, Heinfels/Sillian NE, 1 Ex. 27.VIII.1948 leg. Kofler F.
- AUT Austria, Osttirol, Iselsberg/Nikolsdorf NW, 1 Ex. 25.II.1965 leg. KA
- AUT Austria, Osttirol, Nußdorf, 2 Ex. 11.III.1965 leg. KA
- AUT Austria, Osttirol, Maria Trost/Oberlienz SE, 1 Ex. 20.IV.1960 leg. KA
- AUT Austria, Osttirol, Tschitscheralm/Oberlienz N, 1 Ex. 26.VII.1992 leg. KA
- AUT Austria, Osttirol, Helenental, 1 Ex. 18.V.1958 leg. KA
- DEU Germany, Bavaria, Schwabmünchen/Badstraße 26, 1 Ex. 18.V.1996 leg. Schuster G.
- DEU Germany, Bavaria, Niederaltheim W/Ganzenberg, 1 Ex. 11.V.2006 leg. Schuster G.
- ITA Italy, Südtirol, Sarns/Brixen, 1 Ex. 14.V.1968 leg. Peez A.

Sebirus morio (LINNAEUS, 1761)

- AUT Austria, Burgenland, Winden E/NSG Hackelsberg, 6 Ex. 25.VII.1965, 2 Ex. 25.V.1968 leg. HA
- AUT Austria, Carinthia, Metnitztal/Grades, 2 Ex. 1.V.2004 leg. HE
- AUT Austria, Nordtirol, Innsbruck, Allerheiligenhöfe, 3 Ex. 13.V.1932. 1 Ex. 24.VI.1935 leg. Ratter J.
- AUT Austria, Nordtirol, Innsbruck/Hötting, 1 Ex. 22.V.1932 leg. Ratter J.
- AUT Austria, Nordtirol, Silltal, 1 Ex. 28.III.1952 leg. Wohlmann R.
- AUT Austria, Nordtirol, Innsbruck, Arzl, 1 Ex. 2.V.1950, 1 Ex. 6.V.1950 leg. Wörndle A.
- AUT Austria, Nordtirol, Terfens, 1 Ex. 4.V.1953 leg. Wohlmann R.
- AUT Austria, Upper Austria, Wels/Flughafen, 1 Ex. 25.IV.2009 leg. Schwarz M.
- AUT Austria, Osttirol, Gaimberg, 4 Ex. 25.VI.2007 leg. KA
- AUT Austria, Osttirol, Heinfels/Sillian NE, 1 Ex. 20.V.1989 leg. KA
- AUT Austria, Osttirol, Lienz/Haidenhof, 2 Ex. 3.V.2005 leg. KA
- AUT Austria, Osttirol, Lienz/Gärtnerei Seeber, 1 Ex. 31.V.2002 leg. KA
- AUT Austria, Osttirol, Lienz/Meranerstraße 3, 1 Ex. 20.IV.2010 leg. KA
- AUT Austria, Osttirol, Nörsach/Nikolsdorf SE, 1 Ex. 28.VIII.1969 leg. KA
- DEU Germany, Rheinland-Pfalz, Ingelheim am Rhein, 1 Ex. 15.V.1988 leg. Günther H.
- ITA Italy, Lazio, Rom W/Palidoro, 1 Ex. 1.VIII.1964 leg. HE
- ITA Italy, Südtirol, Sterzing, 1 Ex. 9.VIII.1953 leg. Ceresà
- ITA Italy, Südtirol, Moritzing, 1 Ex. 4.VI.1955 leg. Ratter J.

Sebirus ovatus (HERRICH-SCHAEFFER, 1840)

- AUT Austria, Burgenland, Siegendorfer Puszta, 1 Ex. 18.IV.2014 leg. Eckelt A.
- BGR Bulgaria, Slavjanka, 2 Ex. 8.V.1979 leg. Josifov M.

Genus *Tritomegas* HERRICH-SCHAEFFER, 1843*Tritomegas bicolor* (LINNAEUS, 1758)

- AUT Austria, Burgenland, Neusiedler See, 1 Ex. 1.VII.1965 leg. Weber H.
- AUT Austria, Carinthia, Dietrichstein/Feldkirchen E, 1 Ex. 20.VII.1965, 1 Ex. 1.VIII.1977 leg. KA
- AUT Austria, Carinthia, Metnitztal/Grades, 2 Ex. 1.V.2004 leg. HE
- AUT Austria, Carinthia, Metnitztal/Schnatten, 1 Ex. 29.V.2005 leg. HE
- AUT Austria, Lower Austria, Perwarth, 1 Ex. 3.IX.1984 leg. Ressler F.
- AUT Austria, Lower Austria, Scheibbs-Stadtgebiet, 1 Ex. 28.III.2009 leg. Rausch H.
- AUT Austria, Lower Austria, Purgstaller Heide, 1 Ex. 13.X.1972 leg. Ressler F.
- AUT Austria, Lower Austria, Purgstall an der Erlauf, 1 Ex. 13.II.1970, 1 Ex. 24.II.1970, 1 Ex. 5.IV.1985, 1 Ex. 23.IV.1985 leg. Ressler F.

- AUT Austria, Nordtirol, Ebene/Oetz NW, 1 Ex. 7.V.1964 leg. HA
- AUT Austria, Nordtirol, Hoher Weg, 1 Ex. 14.IV.1958 leg. Wohlmann R.
- AUT Austria, Nordtirol, Innsbruck: Mühlau, Schillerhof, 1 Ex. 1.V.1975, 1 Ex. 23.III.1981 leg. HA
- AUT Austria, Nordtirol, Innsbruck, Arzl, 1 Ex. 7.III.1959 leg. HA
- AUT Austria, Nordtirol, Innsbruck/Harterhof, 8 Ex. 8.II.1959 leg. HA
- AUT Austria, Nordtirol, Innsbruck/Rossau, 2 Ex. 8.III.1959 leg. HA
- AUT Austria, Nordtirol, Innsbruck: Mühlau, 1 Ex. 25.III.1963 leg. HE
- AUT Austria, Nordtirol, Innsbruck, Arzl, 1 Ex. 21.II.1964 leg. HE
- AUT Austria, Nordtirol, Ampass, 1 Ex. 9.IV.1972 leg. HE
- AUT Austria, Nordtirol, Baumkirchen, 2 Ex. 2.IV.1985 leg. Egger M.
- AUT Austria, Nordtirol, Baumkirchen, 2 Ex. 27.IX.1953, 4 Ex. 10.III.1957 leg. HA
- AUT Austria, Nordtirol, Baumkirchen, 2 Ex. 17.VII.1938. 15.VIII.1938 leg. Ratter J.
- AUT Austria, Nordtirol, Mils bei Hall, 4 Ex. 14.III.1953 leg. Pechlaner E.
- AUT Austria, Nordtirol, Mils bei Hall, 1 Ex. 30.VI.1930, 1 Ex. 21.VIII.1944 leg. Ratter J.
- AUT Austria, Nordtirol, Mils bei Hall, 1 Ex. 7.III.1953, 9 Ex. 10.IX.1953, 2 Ex. 15.III.1954 leg. Wohlmann R.
- AUT Austria, Nordtirol, Zirl/Zirler Berg W Fragenstein, 1 Ex. 7.V.1970 leg. HE
- AUT Austria, Nordtirol, Grattenbergl, 1 Ex. 13.VII.1943 leg. Ratter J.
- AUT Austria, Nordtirol, Bruck am Ziller, 1 Ex. 15.IX.1962 leg. HA
- AUT Austria, Nordtirol, Pill/Schwaz SW, 1 Ex. 26.VI.1946 leg. Kofler F.
- AUT Austria, Nordtirol, Stans/Schwaz NE, 1 Ex. 11.III.1946, 1 Ex. 15.III.1946, 1 Ex. 17.III.1947 leg. Kofler F.
- AUT Austria, Upper Austria, Mahrersdorf, 1 Ex. 29.IV.1978, 1 Ex. 15.V.1978 leg. Gusenleitner J.
- AUT Austria, Upper Austria, Linz/Schiltensberg, 3 Ex. 16.III.1959 leg. Schwarz M.
- AUT Austria, Upper Austria, Linz/Ebelsberg, Traunau, 1 Ex. 4.IV.1959 leg. Schwarz M.
- AUT Austria, Upper Austria, Wilhering, 1 Ex. 12.IV.1951 leg. Schwarz M.
- AUT Austria, Upper Austria, Aigen im Mühlkreis, 2 Ex. 20.IV.1972 leg. Gusenleitner J.
- AUT Austria, Upper Austria, Unterhart, 1 Ex. 29.IV.1974 leg. Gusenleitner J.
- AUT Austria, Osttirol, Unteralkus, 1 Ex. 26.III.2006 leg. KA
- AUT Austria, Osttirol, Schloß Weiherburg, 1 Ex. 23.III.1967 leg. KA
- AUT Austria, Osttirol, Amlach/Lienz SW, 1 Ex. 25.IV.1963 leg. KA
- AUT Austria, Osttirol, Aguntum/Debant, 1 Ex. 18.VIII.1966, 1 Ex. 23.V.2002 leg. KA
- AUT Austria, Osttirol, Dölsach, 1 Ex. 6.IV.1987, 1 Ex. 13.III.2007 leg. KA

- AUT Austria, Osttirol, Göriach, 1 Ex. 21.III.1970 leg. KA
- AUT Austria, Osttirol, Gödnach/Dölsach SE, 1 Ex. 4.III.1967 leg. KA
- AUT Austria, Osttirol, Glocknerblick/Kals am Großglockner NW, 1 Ex. 6.VIII.1965 leg. KA
- AUT Austria, Osttirol, Lavant, 1 Ex. 22.VII.1964, 1 Ex. 30.V.1966, 1 Ex. 17.VII.2005 leg. KA
- AUT Austria, Osttirol, Lienz SW: Leisach, 1 Ex. 23.III.2009 leg. KA
- AUT Austria, Osttirol, Burgfrieden/Lienz SW, 1 Ex. 20.IX.2000 leg. KA
- AUT Austria, Osttirol, Unternußdorf/Lienz E, 1 Ex. 5.III.1960, 1 Ex. 26.III.1965, 1 Ex. 28.III.1965 leg. KA
- AUT Austria, Osttirol, Lienz/Schlossbrücke, an der Isel, 1 Ex. 14.III.1959 leg. KA
- AUT Austria, Osttirol, Lienz/linker Iselkai, 1 Ex. 30.III.1960 leg. KA
- AUT Austria, Osttirol, Unternußdorf/Lienz E, 2 Ex. 5.III.1960 leg. Tamanini L.
- AUT Austria, Osttirol, Matrei-Iselufer, 1 Ex. 22.V.2005 leg. KA
- AUT Austria, Osttirol, Nörsach Drauweg, 1 Ex. 11.II.2002, 1 Ex. 31.V.2005 leg. KA
- AUT Austria, Osttirol, Nörsach/Nikolsdorf SE, 1 Ex. 2.V.1964, 1 Ex. 31.VII.2002 leg. KA
- AUT Austria, Osttirol, Nußdorf, 3 Ex. 24.III.1977 leg. KA
- AUT Austria, Osttirol, Tristach/Drauufer, 1 Ex. 16.VIII.2002, 1 Ex. 6.VI.2004 leg. KA
- AUT Austria, Osttirol, Virgen-Mitteldorf S/Feldflur, 1 Ex. 1.I.1991 leg. KA
- AUT Austria, Osttirol, Mitteldorf/Virgen SE, 1 Ex. 23.V.1992 leg. KA
- AUT Austria, Vorarlberg, Feldkirch/Bangs, Matschels, Partenwiesen, 1 Ex. 23.VII.1996 leg. HE
- DEU Germany, Bavaria, Garching Heide, 1 Ex. 1.IV.1982 leg. Wolf I.
- DEU Germany, Bavaria, Traunstein/Aiging, 1 Ex. 20.IV.2018 leg. Wolf I.
- DEU Germany, Bavaria, Traunried, 2 Ex. 3.V.2008 leg. Schuster G.
- DEU Germany, Hessen, Bad Hersfeld/Obersberg, 2 Ex. 1.I.1978 leg. Puthz V.
- HRV Croatia, Primorje-Gorski, Moscenice/Sveta Jelena, 1 Ex. 21.V.2017 leg. Wolf I.
- ITA Italy, Südtirol, Brixen, 1 Ex. 20.V.1952 leg. Kofler F.
- ITA Italy, Südtirol, Frangart, 1 Ex. 9.VI.1954 leg. Ratter J.
- ITA Italy, Südtirol, Eppan, 2 Ex. 29.V.1953, 3 Ex. 5.VI.1955 leg. Ratter J.
- ITA Italy, Südtirol, Kaltern, 2 Ex. 14.VI.1955 leg. Ratter J.
- ITA Italy, Südtirol, St. Pauls/Eppan, 3 Ex. 12.VI.1954 leg. Ratter J.
- ITA Italy, Südtirol, Moritzing, 1 Ex. 12.VI.1955 leg. Ratter J.
- ITA Italy, Südtirol, Marklhof/Girlan E, 2 Ex. 6.VI.1955 leg. Ratter J.
- SVN Slovenia, Kobarid, 1 Ex. 28.V.1993 leg. KA

Tritomegas rotundipennis (DOHRN, 1862)

- AUT Austria, Osttirol, Lienz/ Gärtnererei Seeber, 1 Ex. 12.IV.1978 leg. KA
 AUT Austria, Styria, Raabklamm/Umgebung Arzberg, 1 Ex. 22.VII.2001 leg. LM
 ITA Italy, Trentino-Südtirol, Valle d Ampada, 1 Ex. 3.V.1974 leg. Schedl W.
 ITA Italy, Veneto Alonte, 1 Ex. 1.IV.1972 leg. Osella G.

Tritomegas sexmaculatus (RAMBUR, 1839)

- AUT Austria, Burgenland, Siegendorfer Puszta, 2 Ex. 24.V.2008 leg. HE
 AUT Austria, Burgenland, Rohrbacher Teichwiesen, 1 Ex. 22.VI.2002 leg. HE
 AUT Austria, Burgenland, Winden am See, 1 Ex. 10.VIII.1967, 6 Ex. 18.V.1970 leg. HE
 AUT Austria, Burgenland, Winden am See, 1 Ex. 13.VIII.1960 leg. Schwarz M.
 AUT Austria, Burgenland, Weiden Umgebung, 1 Ex. 28.V.2012 leg. LM
 AUT Austria, Burgenland, Illmitz, 1 Ex. 1.VIII.1965 leg. Frieser R.
 AUT Austria, Burgenland, Illmitz, 10 Ex. 18.V.1965 leg. Kappeller R.
 AUT Austria, Burgenland, Apetlon, 2 Ex. 21.V.1965, 5 Ex. 24.V.1965 leg. Kappeller R.
 AUT Austria, Burgenland, Stoob Umgebung, 1 Ex. 23.V.2008 leg. HE
 AUT Austria, Lower Austria, Wienerwald, 1 Ex. leg. Kubinyi (nd)
 AUT Austria, Lower Austria, Sandberg/Oberweiden, 1 Ex. 19.V.2013 leg. LM
 AUT Austria, Lower Austria, Grafenegg Schloßpark, 1 Ex. 25.V.1987 leg. Gusenleitner J.
 AUT Austria, Lower Austria, Dürnstein, 4 Ex. 21.VI.1970 leg. Hentschölek
 AUT Austria, Lower Austria, Nußdorf ob der Traisen, 1 Ex. leg. Kubinyi (nd)
 AUT Austria, Nordtirol, Vennatal/Brenner NE, 1 Ex. 1.IX.1967 leg. HE
 AUT Austria, Vienna, Vienna Umgebung, 2 Ex. leg. Kubinyi (nd)
 AUT Austria, Vienna, Vienna XIX, 2 Ex. leg. Mader (nd)
 AUT Austria, Vienna, Vienna, Prater, 2 Ex. leg. Kubinyi (nd)
 ESP Spain, Gerona, La Escala/Gerona Umgebung, 2 Ex. 1.VIII.1977 leg. HE
 FRA France, Corse, Saint Florent, 1 Ex. 29.V.1976 leg. Wellschmied
 FRA France, Provence-Alpes-Cote d'Azur, Rians, 2 Ex. 22.V.2017 leg. LM
 ITA Italy, Apulia, Foggia, Mattinata, 2 Ex. 15.V.1975 leg. Seidenstücker G.
 ITA Italy, Südtirol, Bozen/Haselburg, 1 Ex. 26.V.1953 leg. Wohlmann R.
 ITA Italy, Südtirol, Eppan, 1 Ex. 13.VI.1956 leg. Ratter J.
 ITA Italy, Südtirol, Kaltern, 3 Ex. 14.VI.1965, 1 Ex. 1.VI.1966 leg. Ratter J.
 ITA Italy, Trentino-Südtirol, Castelfeder, 1 Ex. 26.IX.1954 leg. HA

Family Thyreocoridae AMYOT & SERVILLE, 1843**Subfamily Thyreocorinae MULSANT & REY, 1867****Genus *Thyreocoris* SCHRANK, 1801***Thyreocoris fulvipennis* (DALLAS, 1851)

TUR Turkey, Izmir, Boz Dag-Boz Dag Yayla, 1 Ex. 1.VII.1973 leg. Osella G.

Thyreocoris scarabaeoides (LINNAEUS, 1758)

AUT Austria, Burgenland, Oslip SE/Silberberg, 1 Ex. 18.V.2013 leg. LM

AUT Austria, Burgenland, Siegendorfer Puszta/Siegenderdorf E, 1 Ex. 18.IV.2014 leg. Eckelt A.

AUT Austria, Burgenland, Güssing W/ Steingraben, 1 Ex. 20.V.1966 leg. HA

AUT Austria, Burgenland, Illmitz, 2 Ex. 1.VIII.1965 leg. Frieser R.

AUT Austria, Burgenland, Winden E/NSG Hackelsberg, 1 Ex. 15.VIII.1967, 2 Ex. 25.VII.1968, 1 Ex. 26.VII.1968, 1 Ex. 25.VIII.1968 leg. HA

AUT Austria, Burgenland, Darscho (= Warmsee)/Apetlon N, 1 Ex. 9.VII.2002 leg. LM

AUT Austria, Burgenland, Illmitz, 1 Ex. 20.IX.1965 leg. HA

AUT Austria, Burgenland, Zurndorfer Heide, 1 Ex. 28.V.1969 leg. Wellschmied

AUT Austria, Carinthia, Viktring/Klagenfurt SW, 1 Ex. 1.V.1965 leg. Hölzel E.

AUT Austria, Lower Austria, Hainburg, Braunsberg, 1 Ex. 17.VIII.1978 leg. HE

AUT Austria, Lower Austria, Hundsheimer Berg, 1 Ex. 23.IV.2011 leg. LM

AUT Austria, Lower Austria, Hainburger Berge, 1 Ex. 8.VII.1961 leg. Weber H.

AUT Austria, Lower Austria, Gmünd-Breitensee/Lainsitz, 1 Ex. 7.VI.2003 leg. LM

AUT Austria, Lower Austria, Purgstall an der Erlauf, 1 Ex. 28.VII.1970, 1 Ex. 7.VIII.1972, 1 Ex. 7.VIII.1972, 1 Ex. 28.VIII.1972, 1 Ex. 20.XII.1972, 1 Ex. 1.I.1973, 1 Ex. 4.VIII.1995 leg. Ressel F.

AUT Austria, Nordtirol, Milser Au/ Erlenau, 1 Ex. 7.X.2005, 1 Ex. 31.X.2005 leg. Kopf T.

AUT Austria, Nordtirol, Höttinger Graben-Innsbruck NW, 1 Ex. 8.V.1963 leg. HA

AUT Austria, Nordtirol, Innsbruck, Arzl, 1 Ex. 17.IV.1947 leg. Wörndle A.

AUT Austria, Nordtirol, Innsbruck/Neuarzl, 6 Ex. 20.X.1961 leg. HA

AUT Austria, Nordtirol, Innsbruck/Pulverturm, 8 Ex. 20.IV.1963 leg. HA

AUT Austria, Nordtirol, Viller Moor/Innsbruck S, 1 Ex. 24.V.1930, 1 Ex. 12.V.1954 leg. Ratter J.

AUT Austria, Nordtirol, Silltal, 1 Ex. 28.III.1952 leg. Wohlmann R.

AUT Austria, Nordtirol, Mühlsee-Innsbruck S, 2 Ex. 11.V.1954 leg. Ratter J.

AUT Austria, Nordtirol, Hasental/Ampass E, 1 Ex. 21.V.1933 leg. Wörndle A.

AUT Austria, Nordtirol, Ampass, 1 Ex. 8.V.1960 leg. HA

- AUT Austria, Nordtirol, Thierburg-Fritzens NE, 1 Ex. 10.V.1946 leg. Kofler F.
- AUT Austria, Nordtirol, Götzens, 1 Ex. 4.VI.1950 leg. Pechlaner E.
- AUT Austria, Nordtirol, Sellraintal, 1 Ex. 18.VIII.1945 leg. Pechlaner E.
- AUT Austria, Nordtirol, Haller Innau, 1 Ex. 1.XI.1930 leg. Ratter J.
- AUT Austria, Nordtirol, Matrei am Brenner, 1 Ex. 1.V.1951 leg. Zschästak A.
- AUT Austria, Nordtirol, Mils bei Hall, 1 Ex. 24.IV.1930, 1 Ex. 15.VIII.1953, 1 Ex. 13.III.1955 leg. Ratter J.
- AUT Austria, Nordtirol, Oberperfuss/Zirl SE, 1 Ex. 16.IV.1947 leg. Pechlaner E.
- AUT Austria, Nordtirol, Ahrntal-Innsbruck S, 1 Ex. 20.IV.1955 leg. Wohlmann R.
- AUT Austria, Nordtirol, Patsch, 1 Ex. 1.V.1952 leg. Wohlmann R.
- AUT Austria, Nordtirol, Scharnitz, 1 Ex. 13.VI.1954 leg. Wohlmann R.
- AUT Austria, Nordtirol, Mösern/Seefeld in Tirol SW, 3 Ex. 24.IX.1963 leg. Pechlaner E.
- AUT Austria, Nordtirol, Telfs, 2 Ex. 24.V.1964, 1 Ex. 15.VIII.1964 leg. HE
- AUT Austria, Nordtirol, Kufstein SE, Eiberg, 1 Ex. 7.V.1936 leg. Scholz
- AUT Austria, Nordtirol, Arzberg/Schwaz S, 1 Ex. 9.VI.1946, 1 Ex. 30.III.1946, 1 Ex. 27.VIII.1950 leg. Kofler F.
- AUT Austria, Nordtirol, Schwaz, 2 Ex. 15.IX.1946 leg. Kofler F.
- AUT Austria, Nordtirol, Stans/Schwaz NE, 1 Ex. 12.III.1946 leg. Kofler F.
- AUT Austria, Nordtirol, Innsbruck/Amraser Au, 2 Ex. 26.V.1930, 1 Ex. 19.IV.1937 leg. Ratter J.
- AUT Austria, Nordtirol, Innsbruck/Amraser Au, 1 Ex. 10.I.1948 leg. Pechlaner E.
- AUT Austria, Osttirol, Gasthof Kreithof/Lienz SE, 1 Ex. 28.III.1946 leg. KA
- AUT Austria, Osttirol, Amlach/Lienz SW, 1 Ex. 12.VIII.1955 leg. Ratter J.
- AUT Austria, Osttirol, Asch, 1 Ex. 3.VI.1987 leg. KA
- AUT Austria, Osttirol, Dörfl/Thal N, 1 Ex. 11.VII.1989 leg. KA
- AUT Austria, Osttirol, Göriach, 1 Ex. 4.V.1996 leg. KA
- AUT Austria, Osttirol, Zettlersfeld/Lienz NE, 1 Ex. 23.VII.1962 leg. KA
- AUT Austria, Osttirol, Dölach, 1 Ex. 10.VII.1988, 1 Ex. 28.V.1989 leg. KA
- AUT Austria, Osttirol, Lienz Umgebung, 1 Ex. 1.IX.1958 leg. (nn)
- AUT Austria, Osttirol, Griebelhof/Lienz W, 1 Ex. 28.IV.1960 leg. KA
- AUT Austria, Osttirol, Lienz/Haidenhof, 3 Ex. 5.III.1961 leg. KA
- AUT Austria, Osttirol, Unternußdorf/Lienz E, 3 Ex. 7.IV.1960 leg. KA
- AUT Austria, Osttirol, Feld/Huben N, 1 Ex. 23.V.1988 leg. KA
- AUT Austria, Osttirol, Nußdorf, 1 Ex. 11.III.1965, 1 Ex. 30.VIII.1971 leg. KA
- AUT Austria, Osttirol, Debant/Lienz E, 2 Ex. 20.II.1965, 2 Ex. 22.II.1965 leg. KA
- AUT Austria, Osttirol, St. Johann im Walde, 1 Ex. 7.IX.2011 leg. KA

- AUT Austria, Osttirol, Feld/St. Veit in Deferegggen SW, 1 Ex. 19.V.1964 leg. KA
 AUT Austria, Osttirol, Thurn/Lienz NW, 1 Ex. 19.III.1986 leg. KA
 AUT Austria, Osttirol, Obermauern W/Virgen NW, 1 Ex. 22.VII.1960, 1 Ex. 28.VIII.1988 leg. KA
 AUT Austria, Osttirol, Peischlach/Umgebung, 1 Ex. 22.VII.2012 leg. KA
 AUT Austria, Upper Austria, Unterhart, 1 Ex. 29.IV.1974 leg. Gusenleitner J.
 AUT Austria, Vienna, Wienerberg, 1 Ex. 1.V.1944 leg. Kubinyi
 AUT Austria, Vienna, Wien, 1 Ex. leg. (nd, nn)
 AUT Austria, Vienna, Stammersdorf, 2 Ex. leg. Kubinyi (nd)
 DEU Germany, Bayern, Untermagerbein, 1 Ex. 12.V.2001 leg. Schuster G.
 DEU Germany, Brandenburg, NSG Mallnow-Oderhänge, 2 Ex. 28.VIII.2010 leg. HE
 DEU Germany, Mecklenburg-Vorpommern, Rügen/NSG Mönchgut-Zicker, 3 Ex. 5.IX.1998 leg. HE
 ITA Italy, Südtirol, Brixen/Tschötsch, 1 Ex. 26.IV.1954 leg. Wohlmann R.
 ITA Italy, Südtirol, Brixen/Tschötscher Heide, 1 Ex. 11.X.1970 leg. Peez A.
 ITA Italy, Südtirol, Brixen/Mellaun, 1 Ex. 12.X.1963 leg. Peez A.
 ITA Italy, Südtirol, Brixen/Schießstand, 1 Ex. 24.V.1963, 1 Ex. 23.IX.1964 leg. Peez A.
 ITA Italy, Südtirol, Brixen, 1 Ex. 7.IX.1961 leg. Peez A.
 ITA Italy, Südtirol, Girlan, 1 Ex. 19.VII.1939 leg. Ratter J.
 ITA Italy, Südtirol, Tiers/St. Sebastian, 1 Ex. 22.VIII.2006 leg. Kopf T.
 ITA Italy, Südtirol, Schlanders, 1 Ex. 18.II.1945 leg. Pechlaner E.

Family Plataspidae DALLAS, 1851

Subfamily Coptosomatinae KIRKALDY, 1909

Genus *Coptosoma* LAPORTE, 1833

Coptosoma biguttulum MOTSCHULSKY, 1860

- PRK North Korea, Hwanghae-namdo, Sujangsan bei Hedzu, 1 Ex. 3.VIII.1974 leg. Josifov M.
 PRK North Korea, Kangwon-do, Kymgang-San, 1 Ex. 29.VII.1974 leg. Josifov M.
 PRK North Korea, Kangwon-do, Wonsan 30 km westl., 5 Ex. 13.IX.1970 leg. Josifov M.
 PRK North Korea, Keson/Bagion, 1 Ex. 5.VIII.1974 leg. Josifov M.
 PRK North Korea, Kjongsong, 1 Ex. 1.IX.1970 leg. Josifov M.

Coptosoma capitatum JAKOVLEV, 1880

- PRK North Korea, Jangkang-do/Sinsadong, 4 Ex. 17.VII.1974 leg. Josifov M.

Coptosoma chinense SIGNORET, 1881

PRK North Korea, Hwanghae-namdo, Sujangsan bei Hedzu, 1 Ex. 3.VIII.1974 leg. Josifov M.

PRK North Korea, Hwanghae-pukto, Pyongsan, 3 Ex. 4.VIII.1974 leg. Josifov M.

Coptosoma mucronatum SEIDENSTÜCKER, 1963

BGR Bulgaria, Burgas, Strandscha Gebirge, 6 Ex. 21.VI.1978 leg. Josifov M.

TUR Turkey, Ankara, Cubuk-Baraji, 2 Ex. 13.VII.1962 leg. Seidenstücker G.

TUR Turkey, Ankara, Kazan, 2 Ex. 22.VI.1975 leg. Osella G.

Coptosoma putoni MONTANDON, 1898

TUR Turkey, Adana, Pozanti, 1 Ex. 18.V.1958 leg. Seidenstücker G.

TUR Turkey, Hatay, Antakya, 1 Ex. 26.V.1970 leg. Gusenleitner J.

TUR Turkey, Hatay, Antakya, 1 Ex. 8.V.1958 leg. Seidenstücker G.

TUR Turkey, Nigde, Ciftehan, 1 Ex. 27.V.1955 leg. Seidenstücker G.

Coptosoma scutellatum (GEOFFROY, 1785)

AUT Austria, Burgenland, Breitenbrunn SW/Thenau-Riegel, 4 Ex. 10.VI.2017 leg. LM

AUT Austria, Burgenland, Breitenbrunn/Thenauriegel, 5 Ex. 26.V.2012 leg. LM

AUT Austria, Burgenland, Güssing N/Tobajer Kogel, 1 Ex. 5.VI.2015 leg. LM

AUT Austria, Burgenland, Hackelsberg/Jois W, 2 Ex. 11.VI.2011 leg. LM

AUT Austria, Burgenland, Neckenmarkt, 1 Ex. 22.VI.2002 leg. HE

AUT Austria, Burgenland, Neusiedlersee, 9 Ex. 1.VII.1965 leg. Weber

AUT Austria, Burgenland, Oberer Stinkersee, 1 Ex. 8.VI.2014 leg. LM

AUT Austria, Burgenland, Siegendorfer Puszta, 2 Ex. 22.VI.2002, 1 Ex. 24.V.2008 leg. HE

AUT Austria, Burgenland, Siegendorfer Puszta/Siegendorf E, 1 Ex. 9.VI.2014 leg. LM

AUT Austria, Carinthia, Bleiburg SW: Gonowetz N, 1 Ex. 24.VIII.1989 leg. Gusenleitner J.

AUT Austria, Carinthia, Bleiburg, 1 Ex. 8.VIII.1972 leg. Gusenleitner J.

AUT Austria, Carinthia, Dietrichstein/Feldkirchen E, 4 Ex. 20.VII.1965 leg. KA

AUT Austria, Carinthia, Lavamünd, 1 Ex. 4.VIII.1988 leg. KA

AUT Austria, Carinthia, Sablatnigmoor, 1 Ex. 29.VII.1989 leg. KA

AUT Austria, Carinthia, St. Paul im Lavanttal, 1 Ex. 24.VIII.1989 leg. Gusenleitner J.

AUT Austria, Lower Austria, Bad Deutsch Altenburg, 1 Ex. 5.IX.1940 leg. Blühweiss F.

AUT Austria, Lower Austria, Bad Deutsch Altenburg, 5 Ex. leg. Kubinyi (nd)

AUT Austria, Lower Austria, Bisamberg, 2 Ex. 17.VI.2000 leg. HE

- AUT Austria, Lower Austria, Guntramsdorf, 3 Ex. 17.VI.1960, 1 Ex. 19.VI.1960 leg. Schwarz M.
- AUT Austria, Lower Austria, Hochrieß/Heide, 1 Ex. 4.VIII.1984 leg. Ressler F.
- AUT Austria, Lower Austria, Mühling E/Erlaufau, 1 Ex. 27.VI.1984 leg. Ressler F.
- AUT Austria, Lower Austria, Obergrünbach bei Karlstein, 1 Ex. 31.VIII.1991 leg. Gusenleitner J.
- AUT Austria, Lower Austria, Oberndorf an der Melk, 1 Ex. 21.VIII.1971 leg. Rausch H.
- AUT Austria, Lower Austria, Oberweiden, 1 Ex. 12.VII.1941 leg. Blühweiss F.
- AUT Austria, Lower Austria, Oberweiden, 2 Ex. 5.VIII.1959 leg. Schwarz M.
- AUT Austria, Lower Austria, Purgstall an der Erlauf, 1 Ex. 19.VI.1984, 1 Ex. 19.VI.1985, 1 Ex. 4.VII.1985, 1 Ex. 3.VIII.1985, 1 Ex. 20.VI.1986, 2 Ex. 26.VII.1986, 2 Ex. 20.VI.1996, leg. Ressler F.
- AUT Austria, Lower Austria, Schauboden, 1 Ex. 11.VII.1984, 2 Ex. 14.VIII.1984, 1 Ex. 24.VIII.1985, 2 Ex. 7.VII.1989 leg. Ressler F.
- AUT Austria, Lower Austria, Weikendorf, 1 Ex. leg. Kubinyi (nd)
- AUT Austria, Lower Austria, Zehnbach, 3 Ex. 10.VIII.1985 leg. Ressler F.
- AUT Austria, Nordtirol, Ahrntal-Innsbruck S, 2 Ex. 12.IX.1949, 1 Ex. 15.VI.1950 leg. Wohlmann R.
- AUT Austria, Nordtirol, Arzler Alm-Innsbruck N, 1 Ex. 6.VI.1949 leg. Ratter J.
- AUT Austria, Nordtirol, Arzler Alm, 1 Ex. 2.IX.1956 leg. HA
- AUT Austria, Nordtirol, Brennerbahn, 1 Ex. 4.VIII.1982 leg. Zschästak A.
- AUT Austria, Nordtirol, Fallerscheinalpe/Namlos SW, 6 Ex. 10.VII.1945 leg. Kofler F.
- AUT Austria, Nordtirol, Fritzens, 1 Ex. leg. Zschästak A.
- AUT Austria, Nordtirol, Gärberbach-Innsbruck S, 1 Ex. 25.VI.1927 leg. Ratter J.
- AUT Austria, Nordtirol, Gnadenwald/St. Martin, 1 Ex. 3.VII.1974 leg. HA
- AUT Austria, Nordtirol, Hinterriß, 1 Ex. 5.IX.2020 leg. Egger M.
- AUT Austria, Nordtirol, Innsbruck, Arzl, 1 Ex. 28.VI.1967, 1 Ex. 12.VIII.1967 leg. HE
- AUT Austria, Nordtirol, Innsbruck, Hechenberg SW, 1 Ex. 31.VII.1955 leg. Pechlaner E.
- AUT Austria, Nordtirol, Innsbruck/Arzler Lehmgrube, 2 Ex. 29.VII.1966 leg. HE
- AUT Austria, Nordtirol, Innsbruck/Hötting, 1 Ex. 13.VIII.1943, 1 Ex. 27.VI.1944, 6 Ex. 5.VII.1944 leg. Wörndle A.
- AUT Austria, Nordtirol, Innsbruck/Hötting, 1 Ex. 22.VI.1943 leg. Pechlaner E.
- AUT Austria, Nordtirol, Innsbruck/Hötting/ Sprengerkreuz, 1 Ex. 2.VII.1960 leg. HA
- AUT Austria, Nordtirol, Innsbruck/Kranebitten, 1 Ex. 13.VII.1939 leg. Ratter J.
- AUT Austria, Nordtirol, Innsbruck: Mühlau, 1 Ex. 1.VII.2012 leg. HE
- AUT Austria, Nordtirol, Innsbruck: Mühlau, Schillerhof, 1 Ex. 10.IX.1966, 2 Ex. 27.VI.1971 leg. HA

- AUT Austria, Nordtirol, Innsbruck: Mühlau, Wurbach, 2 Ex. 8.VII.1961 leg. HA
- AUT Austria, Nordtirol, Kreith/Patsch W, 2 Ex. 25.VII.1937 leg. Ratter J.
- AUT Austria, Nordtirol, Martinswand/Zirl SE, 1 Ex. 28.VIII.1949 leg. Pechlaner E.
- AUT Austria, Nordtirol, Stans/Schwaz NE, 2 Ex. 15.VI.1946, 7 Ex. 17.VII.1966 leg. Kofler F.
- AUT Austria, Nordtirol, Tratzberg/Jenbach SW, 2 Ex. 1.VI.1947, 1 Ex. 11.VI.1947, 1 Ex. 17.IX.1947 leg. Kofler F.
- AUT Austria, Nordtirol, Unterberg/Innsbruck SW, 1 Ex. 28.VIII.1955 leg. HA
- AUT Austria, Nordtirol, Unterberg/Innsbruck SW, 1 Ex. 6.VII.1934, 2 Ex. 14.VII.1944 leg. Ratter J.
- AUT Austria, Nordtirol, Unterberg/Innsbruck SW, 2 Ex. 3.VII.1949 leg. Pechlaner E.
- AUT Austria, Nordtirol, Vomperbach/Schwaz SW, 1 Ex. 5.VI.1964 leg. HE
- AUT Austria, Nordtirol, Weer, 1 Ex. 30.V.1946 leg. Kofler F.
- AUT Austria, Nordtirol, Zirl NE: Ehnbachklamm, 1 Ex. 17.IX.1954 leg. HA
- AUT Austria, Nordtirol, Zirl, 1 Ex. 31.V.1969 leg. HE
- AUT Austria, Nordtirol, Zirler Schloßberg/Zirl N, 5 Ex. 14.VI.1969, 7 Ex. 4.IX.1969, 2 Ex. 23.VII.1970 leg. HE
- AUT Austria, Osttirol, Aguntum/Debant, 7 Ex. 2.VIII.1985 leg. KA
- AUT Austria, Osttirol, Bannberg/Lienz SW, 1 Ex. 8.VIII.1992 leg. KA
- AUT Austria, Osttirol, Gasthof Kapaun/Görtschach SSE/ Dölsach SE, 12 Ex. 28.VI.1982, 4 Ex. 2.VIII.1985, 10 Ex. 5.VIII.1985 leg. KA
- AUT Austria, Osttirol, Gödnach/Nikolsdorf NW, 1 Ex. 6.IX.1994 leg. KA
- AUT Austria, Osttirol, Leisach SE/Bahnbrücke, 9 Ex. 11.VII.1966 leg. KA
- AUT Austria, Osttirol, Lengberg/Nikolsdorf NW, 3 Ex. 12.VII.1984, 2 Ex. 10.VIII.1985, 1 Ex. 4.VI.2002 leg. KA
- AUT Austria, Osttirol, Lienz SW: Leisach, 6 Ex. 23.VIII.1968, 10 Ex. 25.VII.1969, 1 Ex. 4.VII.1970, 1 Ex. 30.VI.1984, 1 Ex. 27.VII.1987, 3 Ex. 9.VI.2003, 1 Ex. 12.VII.2006 leg. KA
- AUT Austria, Osttirol, Lienz/Schloßberg, unterer Teil, 3 Ex. 19.VII.1976 leg. Ernstbrunner
- AUT Austria, Osttirol, Lienzer Klause/Lienz SW, 1 Ex. 23.VII.2010 leg. KA
- AUT Austria, Osttirol, Nörsach/Nikolsdorf SE, 7 Ex. 18.VII.1979, 2 Ex. 2.VII.1987 leg. KA
- AUT Austria, Osttirol, Thal, 1 Ex. 29.VII.1995, 1 Ex. 15.VIII.2005 leg. KA
- AUT Austria, Osttirol, Tristach/Draufufer, 4 Ex. 25.VI.2005 leg. KA
- AUT Austria, Styria, Klöch, 1 Ex. 14.VII.1983 leg. Gusenleitner J.
- AUT Austria, Styria, Klöchberg, 1 Ex. 22.VI.1990 leg. Gusenleitner J.
- AUT Austria, Upper Austria, Hainberg, 1 Ex. 2.VII.1991 leg. Gusenleitner J.

- AUT Austria, Upper Austria, Sankt Georgen an der Gusen/Adamshaufen, 3 Ex. 1.VIII.1990 leg. Gusenleitner J.
- AUT Austria, Vienna, Stammersdorf, 1 Ex. leg. (nn, nd)
- AUT Austria, Vorarlberg, Feldkirch/Bangs, 1 Ex. 23.VII.1996 leg. HE
- CHE Switzerland, Ticino, Lugano, 1 Ex. 4.VII.1991 leg. Wolf I.
- CHE Switzerland, Wallis, Leukerbad-Bajingsee, 2 Ex. 6.VIII.1999 leg. LM
- CHE Switzerland, Wallis, Sierre (Siders), 1 Ex. 13.VI.1959 leg. Priesner H.
- DEU Germany, Bavaria, Kelheim, 2 Ex. 24.VIII.1989 leg. Döberl M.
- DEU Germany, Thüringen, Asbach, 1 Ex. 3.VII.2012 leg. LM
- DEU Germany, Thüringen, Kyffhäuser, Ochsenburg Umgebung, 1 Ex. 16.VII.2009 leg. LM
- FRA France, Occitanie, Cordes-sur-Ciel/Umgebung, 1 Ex. 3.VII.2014 leg. LM
- HRV Croatia, Istria, Barban/Grzini, 1 Ex. 11.VI.2017 leg. Wolf I.
- HRV Croatia, Istria, Buje, 2 Ex. 25.VIII.1982 leg. KA
- HRV Croatia, Istria, Buje, 7 Ex. 20.VIII.1982 leg. KA
- HRV Croatia, Istria, Krsan/Vozilici 8 km N, 1 Ex. 28.V.2017 leg. Wolf I.
- HRV Croatia, Istria, Milotski Breg/2 km südl., 1 Ex. 19.V.2018 leg. Wolf I.
- HRV Croatia, Istria, Pazin W: Tinjan, 1 Ex. 22.VIII.1982 leg. KA
- HRV Croatia, Primorje-Gorski, Skalnica, 2 Ex. 17.VI.2017 leg. Wolf I.
- HUN Hungary, Pest, Budai Berge, 1 Ex. 20.VIII.1983 leg. HE
- ITA Italy, Basilikata, Lagonegro SE, 6 Ex. 3.VII.2016 leg. LM
- ITA Italy, Belluno, Belluno, 1 Ex. 23.VII.1963 leg. HA
- ITA Italy, Friaul- Julisch-Venetien, San Martino, 3 Ex. 29.V.1993 leg. KA
- ITA Italy, Friaul-Julisch-Venetien, Zellina, 1 Ex. 24.VIII.1978 leg. KA
- ITA Italy, Gorizia, Carso di Doberdò/Redipuglia E, 1 Ex. 30.V.1993 leg. KA
- ITA Italy, Gorizia, Isonzo, Lagune, 1 Ex. 30.V.1993 leg. KA
- ITA Italy, Südtirol, Brixen/Millander Bach, 2 Ex. 10.VI.1961 leg. Peez A.
- ITA Italy, Südtirol, Eppan, 3 Ex. 1.VI.1956 leg. Ratter J.
- ITA Italy, Südtirol, Kaltern, 3 Ex. 25.V.1953 leg. Wohlmann R.
- ITA Italy, Südtirol, Klausen, 2 Ex. 30.VIII.1953 leg. HA
- ITA Italy, Südtirol, Klausen, 3 Ex. 15.VII.1958 leg. Kappeller R.
- ITA Italy, Südtirol, Klausen, 4 Ex. 27.VI.1954 leg. Wohlmann R.
- ITA Italy, Südtirol, Moritzing, 3 Ex. 1.VI.1956 leg. Ratter J.
- ITA Italy, Trentino, Trient, 7 Ex. 25.VII.1954 leg. HA
- ITA Italy, Trentino-Südtirol, Castelfeder, 2 Ex. 26.VI.1954 leg. HA
- ROU Romania, Eisenmarkt, Valisoara S/2 km, 2 Ex. 14.VI.2017 leg. Mühle H.

Systematic catalogue of included Cydnidae, Thyreocoridae & Plataspidae

Illustrated species are marked with *

Family Cydnidae BILLBERG, 1820

Subfamily Cephalocteinae MULSANT & REY, 1867

Genus *Stibaropus* DALLAS, 1851

Stibaropus henkei (JAKOVLEV, 1874) *

Subfamily Cydninae BILLBERG, 1820

Genus *Chilocoris* MAYR, 1864

Chilocoris heissi LIS, 1994

Chilocoris nepalensis LIS, 1994

Chilocoris nitidulus LIS, 1994

Chilocoris piceus SIGNORET, 1884 *

Genus *Cydnus* FABRICIUS, 1803

Cydnus aterrimus (FORSTER, 1703) *

Genus *Aethus* DALLAS, 1851

Aethus lindbergi WAGNER, 1957 *

Aethus pilosus (HERRICH-SCHAEFFER, 1834)

Genus *Byrsinus* FIEBER, 1860

Byrsinus albipennis (A. COSTA, 1853)

Byrsinus balcanicus (JOSIFOV, 1986)

Byrsinus flavicornis (FABRICIUS, 1794)

Byrsinus laticollis (WAGNER, 1954)

Byrsinus pilosulus (KLUG, 1845) *

Byrsinus syriacus (HORVATH, 1917)

Genus *Fromundus* DISTANT, 1901

Fromundus pygmaeus (DALLAS, 1851) *

Genus *Geotomus* MULSANT & REY, 1866

Geotomus brunnipennis WAGNER, 1953

Geotomus elongatus (HERRICH-SCHAEFFER, 1840)

Geotomus petiti WAGNER, 1954

Geotomus punctulatus (A. COSTA, 1847) *

Genus *Lactistes* SCHIODTE, 1848

Lactistes incertus SIGNORET, 1881 *

Lactistes rastellus SCHIODTE, 1848 (exld)

Genus *Macroscytus* FIEBER, 1860

Macroscytus brunneus (FABRICIUS, 1803) *

Genus *Microporus* UHLER, 1872

Microporus nigrita (FABRICIUS, 1794) *

Genus *Coloecydnus* LIS, 1994

Coloecydnus ernsti LIS, 1994 * Holotype

Subfamily Sehirinae AMYOT & SERVILLE, 1843**Genus *Amaurocoris* STÅL, 1865***Amaurocoris curtus* (BRULLÉ, 1839) ***Genus *Linospa* SIGNORET, 1881***Linospa orbicularis* (JAKOVLEV, 1885) ***Genus *Adomerus* MULSANT & REY, 1865***Adomerus biguttatus* (LINNAEUS, 1758) ***Genus *Canthophorus* MULSANT & REY, 1866***Canthophorus dubius* (SCOPOLI, 1863)*Canthophorus impressus* (HORVATH, 1880) **Canthophorus maculipes* (MULSANT & REY, 1852)*Canthophorus melanopterus contrarius* (WAGNER, 1956)*Canthophorus melanopterus melanopterus* (HERRICH-SCHAEFFER, 1835)*Canthophorus mixtus* ASANOVA, 1964**Genus *Crocistethus* FIEBER, 1860***Crocistethus waltlianus* (FIEBER, 1837) ***Genus *Exosehirus* WAGNER, 1963***Exosehirus marginatus* (SIGNORET, 1881) ***Genus *Legnotus* SCHIODTE, 1848***Legnotus fumigatus* (A. COSTA, 1853)*Legnotus limbosus* (GEOFFROY, 1785) **Legnotus picipes* (FALLEN, 1807)**Genus *Ochetostethus* FIEBER, 1860***Ochetostethus balcanicus* WAGNER, 1940*Ochetostethus heissi* MAGNIEN, 2006*Ochetostethus nanus* HERRICH-SCHAEFFER, 1834*Ochetostethus opacus* (SCHOLTZ, 1847)*Ochetostethus pygmaeus* (RAMBUR, 1839) **Ochetostethus tarsalis* (MULSANT & REY, 1852)**Genus *Sehirus* AMYOT & SERVILLE, 1843***Sehirus luctuosus* MULSANT & REY, 1866*Sehirus morio* (LINNAEUS, 1761) **Sehirus ovatus* (HERRICH-SCHAEFFER, 1840)**Genus *Tritomegas* HERRICH-SCHAEFFER, 1843***Tritomegas bicolor* (LINNAEUS, 1758)*Tritomegas rotundipennis* (DOHRN, 1862)*Tritomegas sexmaculatus* (RAMBUR, 1839) ***Family Thyreocoridae AMYOT & SERVILLE, 1843****Subfamily Thyreocorinae MULSANT & REY, 1867****Genus *Thyreocoris* SCHRANK, 1801***Thyreocoris fulvipennis* (DALLAS, 1851)*Thyreocoris scarabaeoides* (LINNAEUS, 1758) *

Family Plataspidae DALLAS, 1851

Subfamily Coptosomatinae KIRKALDY, 1909

Genus *Coptosoma* LAPORTE, 1833

Coptosoma biguttulum MOTSCHULSKY, 1860

Coptosoma capitatum JAKOVLEV, 1880

Coptosoma chinense SIGNORET, 1881

Coptosoma mucronatum SEIDENSTÜCKER, 1963 * Paratype

Coptosoma putoni MONTANDON, 1898

Coptosoma scutellatum (GEOFFROY, 1785)

Acknowledgements

Ernst Heiss thanks his friends and colleagues who generously donated voucher specimens or by-catches, thus considerably contributing to the present size of the collection. The authors are grateful to the editors of *Entomologica Austriaca*, Martin Schebeck and Patrick Krapf, for editing this article and the Austrian Entomological Society (Österreichische Entomologische Gesellschaft, ÖEG) for maintaining this journal.

References

- AUKEMA B., RIEGER C. & RABITSCH W. 2013 (eds): Catalogue of the Heteroptera of the Palaearctic Region. Vol. 6. – The Netherlands Entomological Society, Amsterdam, Supplement: 48–55.
- DAVIDOVÁ-VILÍMOVÁ J. 2006: Family Plataspidae DALLAS, 1851 – In: AUKEMA B., RIEGER, C. 2006 (eds): Catalogue of the Heteroptera of the Palaearctic Region. Vol. 5. – The Netherlands Entomological Society, Amsterdam, 150–165.
- HEISS E., ECKELT A., LEDERWASCH M. & UNTERASINGER R. 2023: Die Heteropterensammlung Ernst Heiss im Tiroler Landesmuseum Ferdinandeum. Teil XII: Pentatomomorpha V: Familie Berytidae. – *Beiträge zur Entomofaunistik* 24: 33–53.
- LIS J.A. 2006: Family Cydnidae BILLBERG, 1820 – In: Catalogue of the Heteroptera of the Palaearctic Region. Vol. 5. – The Netherlands Entomological Society, Amsterdam, 119–147.
- LIS J.A. 2006: Family Thyreocoridae AMYOT & SERVILLE, 1843 – In: Catalogue of the Heteroptera of the Palaearctic Region. Vol. 5. – The Netherlands Entomological Society, Amsterdam, 148–149.
- SCHUH R. T. & WEIRAUCH CH. 2020: True Bugs of the World (Hemiptera: Heteroptera), Classification and Natural History (second edition). – Monograph Series 8, Siri Scientific Press, Manchester UK.

Addresses of the authors

Ernst HEISS, Josef Schraffl Straße 2a, 6020 Innsbruck, Austria. E-Mail: aradus@aon.at

Andreas ECKELT, Manfred LEDERWASCH, Romed UNTERASINGER,
Tiroler Landesmuseum Ferdinandeum, Naturwissenschaftliche Sammlungen,
Sammlungs- und Forschungszentrum SFZ, Krajcncstraße 1, 6060 Hall i. T., Austria.
E-Mail: a.eckelt@tiroler-landesmuseen.at, m.lederwasch@tiroler-landesmuseen.at,
r.unterasinger@tiroler-landesmuseen.at

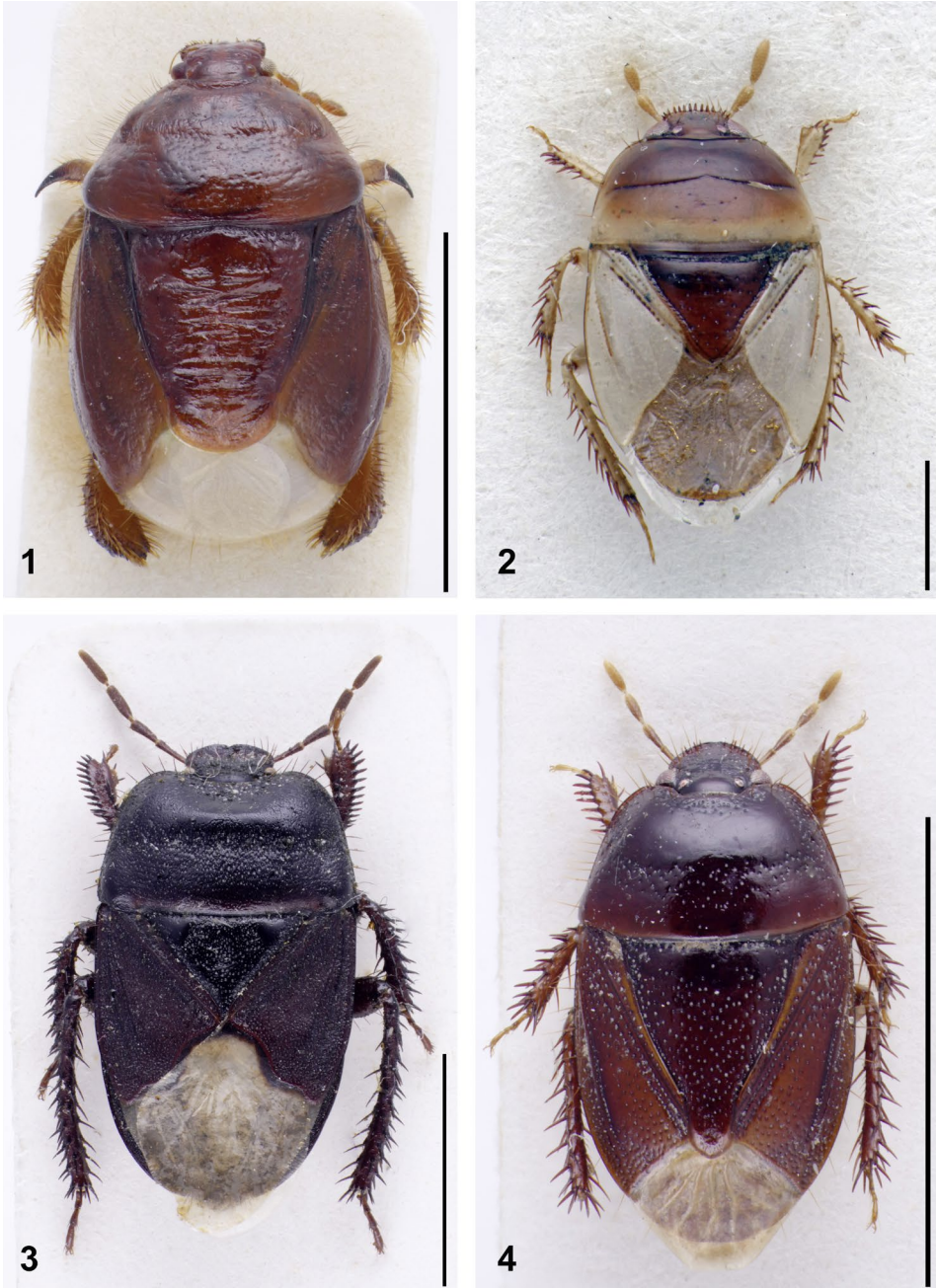


Fig. 1: *Stibaropus henkei* ♀ (BGR Burgas). **Fig. 2:** *Chilocoris piceus* ♂ (PAK Sindh). **Fig. 3:** *Cydnus aterrimus* ♂ (ESP Gerona). **Fig. 4:** *Aethus lindbergi* ♀ (PAK Punjab). All pictures © A. Eckelt. Scale: Fig. 1, 3, 4 = 5 mm; Fig. 2 = 1 mm



Fig.5: *Byrsinus pilosulus* ♂ (AUT Burgenland). **Fig.6:** *Fromundus pygmaeus* ♀ (PAK Punjab). **Fig.7:** *Geotomus punctulatus* ♂ (ESP Alava). **Fig.8:** *Lactistes incertus* ♂ (YEM Wadi Sihan). All pictures © A. Eckelt. Scale: Fig.5–8 = 3 mm



Fig. 9: *Macroscythus brunneus* ♀ (IRN Mazanderan). **Fig. 10:** *Microporus nigrita* ♀ (ITA Lombardia). **Fig. 11:** *Coleocydnus ernsti* ♂ (RWA Cyangugu), holotype. **Fig. 12:** *Amaurocoris curtus* ♂ (SAU Eastern Province). All pictures © A. Eckelt. Scale: Fig. 9 = 5 mm; Fig. 10–12 = 3 mm



Fig. 13: *Linospa orbicularis* ♀ (SAU Riyadh). **Fig. 14:** *Adomerus biguttatus* ♀ (ITA Trentino). **Fig. 15:** *Canthophorus impressus* ♂ (SVN Predel). **Fig. 16:** *Crocistethus waltianus* ♂ (ESP Andalusia). All pictures © A. Eckelt. Scale: Fig. 13–16 = 3 mm

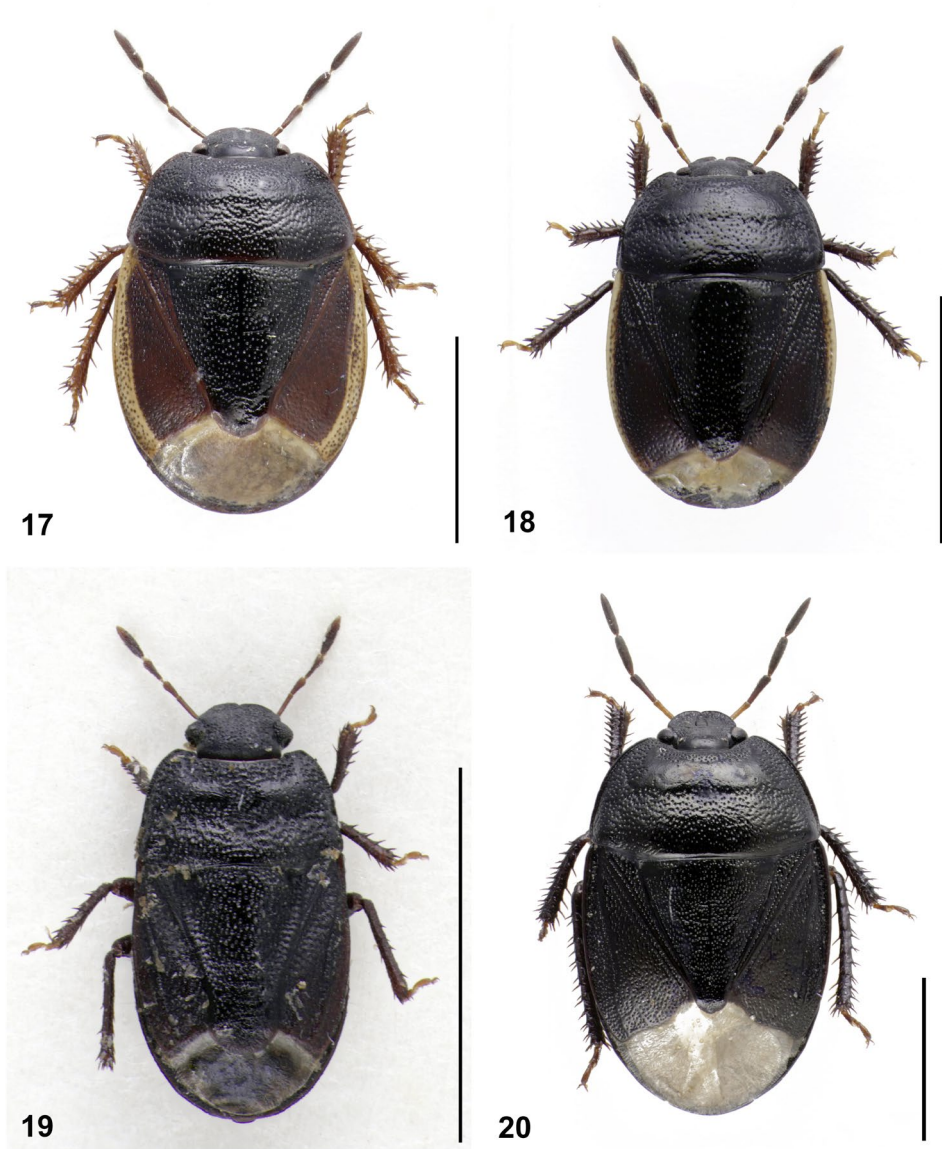


Fig. 17: *Exosehirus marginatus* ♀ (TUR Nigde). **Fig. 18:** *Legnotus limbosus* ♀ (AUT Burgenland). **Fig. 19:** *Ochetostethus pygmaeus* ♀ (ESP Canary Islands, Gran Canaria). **Fig. 20:** *Sehirus morio* ♀ (AUT Kärnten). All pictures © A. Eckelt. Scale: Fig. 17–20 = 3 mm

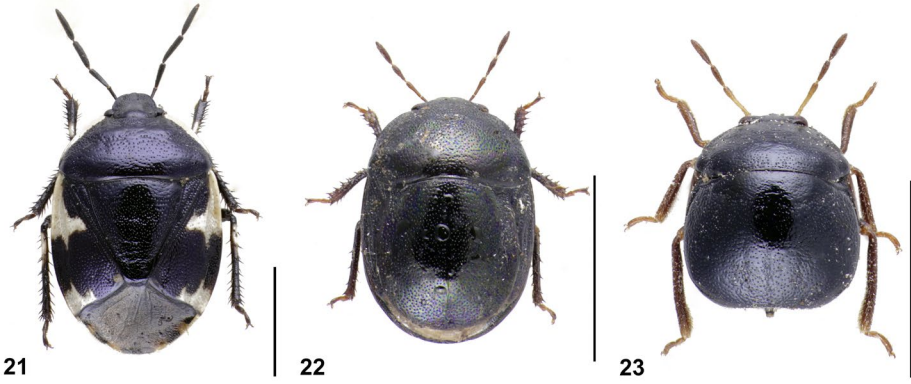


Fig. 21: *Tritomegas sexmaculatus* ♀ (AUT Burgenland). **Fig. 22:** *Thyreocoris scarabaeoides* ♀ (AUT Niederösterreich). **Fig. 23:** *Coptosoma mucronatum* ♂ (TUR Ankara), paratype. All pictures © A. Eckelt. Scale: Fig. 21–23 = 3mm